

Product datasheet for **TP306177L**

KCTD21 (NM_001029859) Human Recombinant Protein

Product data:

Product Type:	Recombinant Proteins
Description:	Recombinant protein of human potassium channel tetramerisation domain containing 21 (KCTD21), 1 mg
Species:	Human
Expression Host:	HEK293T
Expression cDNA Clone or AA Sequence:	>RC206177 protein sequence Red =Cloning site Green =Tags(s)
	MSDPITLNVGGKLYTTSLATLTSFPDSMLGAMFSGKMPTKRDSQGNCFIDRDGKVFYRILNFLRTSHLDL PEDFQEMGLLRREADFYQVQPLIEALQEKEVELSKAEKNAMLNITLNQRVQTVHFTVREAPQIYSLSSSS MEVFNANIFSTSCFLKLLGSKLFYCSNGNLSSITSHLQDPNHLTLDWVANVEGLPEEEYTKQNLKRLWV VPANKQINSFQVFVEEVKIALSDGFCIDSSHPHALDFMNNKIIRLIRYR
	TRTRPLEQKLISEEDLAANDILDYKDDDDKV
Tag:	C-Myc/DDK
Predicted MW:	29.5 kDa
Concentration:	>0.05 µg/µL as determined by microplate BCA method
Purity:	> 80% as determined by SDS-PAGE and Coomassie blue staining
Buffer:	25 mM Tris-HCl, 100 mM glycine, pH 7.3, 10% glycerol
Preparation:	Recombinant protein was captured through anti-DDK affinity column followed by conventional chromatography steps.
Note:	For testing in cell culture applications, please filter before use. Note that you may experience some loss of protein during the filtration process.
Storage:	Store at -80°C.
Stability:	Stable for 12 months from the date of receipt of the product under proper storage and handling conditions. Avoid repeated freeze-thaw cycles.
RefSeq:	<u>NP_001025030</u>
Locus ID:	283219



[View online »](#)

UniProt ID: [Q4G0X4](#)

RefSeq Size: 3396

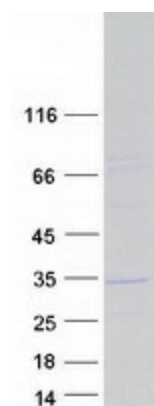
Cytogenetics: 11q14.1

RefSeq ORF: 780

Synonyms: KCASH2

Summary: Probable substrate-specific adapter of a BCR (BTB-CUL3-RBX1) E3 ubiquitin-protein ligase complex mediating the ubiquitination and subsequent proteasomal degradation of target proteins. Promotes the ubiquitination of HDAC1. Can function as antagonist of the Hedgehog pathway by affecting the nuclear transfer of transcription factor GLI1; the function probably occurs via HDAC1 down-regulation, keeping GLI1 acetylated and inactive. Inhibits cell growth and tumorigenicity of medulloblastoma (MDB) (PubMed:21472142).[UniProtKB/Swiss-Prot Function]

Product images:



Coomassie blue staining of purified KCTD21 protein (Cat# [TP306177]). The protein was produced from HEK293T cells transfected with KCTD21 cDNA clone (Cat# [RC206177]) using MegaTran 2.0 (Cat# [TT210002]).