

Product datasheet for **TP306171**

POGLUT3 (NM_153705) Human Recombinant Protein

Product data:

Product Type: Recombinant Proteins

Description: Recombinant protein of human KDEL (Lys-Asp-Glu-Leu) containing 2 (KDEL2), 20 µg

Species: Human

Expression Host: HEK293T

Expression cDNA Clone or AA Sequence: >RC206171 protein sequence
Red=Cloning site **Green**=Tags(s)

MRRLPRALLQLRLALLVAAGAPEVLVSAPRSLVWGPGQLAAVVLPRVRYFYLQAVNSEGQNLTRSPAGET
PFKVVVKSLSPKELVRIHVPKPLDRNDGTFLMRMYETVDEGLKIEVLYGDEHVAQSPYILKGPVYHEY
CECPEDPQAWQKTLSCPTKEPQIAKDFASFPSINLQQMLKEVPKRFGDERGAIVHYTILNNHVYRRSLGK
YTDKMFSDIILLSTRKVLLPDLEFYVNLGDWPLEHRKVNGTPSPIIISWCGSLDSRDVWLPTYDITH
SMLEAMRGVTNDLLSIQGNTGPSWINKTERAFFRGRDSLEERLQLVQLSKENPQLLDAGITGYFFFQEKE
KELGKAKLMGFFDFFKYQVNVDTVAAYRYPYMLGDSLVLKQDSPYEHFYMALEPWKHVYPIKRNL
SDLLEKVKWAKENDEEAKKIAKEGQLMARDLLQPHRLCYCYQVLQKYAERQSSKPEVRDGMELVPQPED
STAICQCHRRKPSREEL

TRTRPLEQKLISEEDLAANDILDYKDDDDKV

Tag: C-Myc/DDK

Predicted MW: 58.4 kDa

Concentration: >0.05 µg/µL as determined by microplate BCA method

Purity: > 80% as determined by SDS-PAGE and Coomassie blue staining

Buffer: 25 mM Tris-HCl, 100 mM glycine, pH 7.3, 10% glycerol

Preparation: Recombinant protein was captured through anti-DDK affinity column followed by conventional chromatography steps.

Note: For testing in cell culture applications, please filter before use. Note that you may experience some loss of protein during the filtration process.

Storage: Store at -80°C.

Stability: Stable for 12 months from the date of receipt of the product under proper storage and handling conditions. Avoid repeated freeze-thaw cycles.



[View online »](#)

RefSeq: NP_714916

Locus ID: 143888

UniProt ID: Q7Z4H8

RefSeq Size: 4311

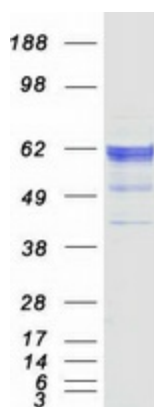
Cytogenetics: 11q22.3

RefSeq ORF: 1521

Synonyms: KDELC2

Summary: Protein glucosyltransferase that catalyzes the transfer of glucose from UDP-glucose to a serine residue within the consensus sequence peptide C-X-N-T-X-G-S-F-X-C (PubMed:30127001). Can also catalyze the transfer of xylose from UDP-xylose but less efficiently (PubMed:30127001). Specifically targets extracellular EGF repeats of proteins such as NOTCH1 and NOTCH3 (PubMed:30127001). May regulate the transport of NOTCH1 and NOTCH3 to the plasma membrane and thereby the Notch signaling pathway (PubMed:30127001).[UniProtKB/Swiss-Prot Function]

Product images:



Coomassie blue staining of purified POGLUT3 protein (Cat# TP306171). The protein was produced from HEK293T cells transfected with POGLUT3 cDNA clone (Cat# [RC206171]) using MegaTran 2.0 (Cat# [TT210002]).