

Product datasheet for TP306165M

epsilon Tubulin (TUBE1) (NM_016262) Human Recombinant Protein

Product data:

Product Type: Recombinant Proteins

Description: Recombinant protein of human tubulin, epsilon 1 (TUBE1), 100 µg

Species: Human

Expression Host: HEK293T

Expression cDNA Clone or AA Sequence: >RC206165 protein sequence
Red=Cloning site Green=Tags(s)

MTQSVVVQVGQCGNQIGCCFWDLALREHAAVNQKGIYDEAISSFFRNVDTRVVGDDGGSISKGKICSLKAR
AVLIDMEEGVNEILQGPLRDVFDTKQLITDISGSGNNWAVGHKVFGLYQDQILEKFRKSAEHCDCLQC
FFIIHSMGGGTGSGLGTFLLKVEDEFPEVYRFVTSIYPSGEDDVITSPYNSILAMKELNEHADCVLPID
NQSLFDIISKIDLMVNSGKLGTTVKPKSLVTSSSGALKKQHKKPFDAMNNIVANLLLNLTSARFEGSLN
MDLNEISMNLVFPQLHYLVSSLTPLYTLTDVNIPRRLDQMFSDAFSKDHQLLRADPKHSLYLACALMV
RGNVQISDLRRNIERLKPSLQFVSWNQEGWKTSLCSVPPVGHSHLLALANNTCVKPTFMELKERFMRLY
KKKAHLHHYLQVEGMEESCFTAVSSLSALIQEYDQLDATKNMPVQDLPRLSIAM

TRTRPLEQKLISEEDLAANDILDYKDDDDKV

Tag: C-Myc/DDK

Predicted MW: 52.8 kDa

Concentration: >0.05 µg/µL as determined by microplate BCA method

Purity: > 80% as determined by SDS-PAGE and Coomassie blue staining

Buffer: 25 mM Tris-HCl, 100 mM glycine, pH 7.3, 10% glycerol

Preparation: Recombinant protein was captured through anti-DDK affinity column followed by conventional chromatography steps.

Note: For testing in cell culture applications, please filter before use. Note that you may experience some loss of protein during the filtration process.

Storage: Store at -80°C.

Stability: Stable for 12 months from the date of receipt of the product under proper storage and handling conditions. Avoid repeated freeze-thaw cycles.

RefSeq: [NP_057346](#)



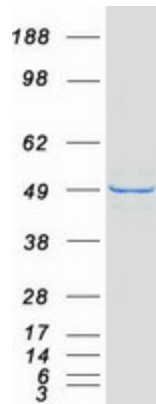
[View online »](#)

Locus ID: 51175
UniProt ID: [Q9UJT0](#)
RefSeq Size: 2314
Cytogenetics: 6q21
RefSeq ORF: 1425
Synonyms: dj142L7.2; TUBE

Summary: This gene encodes a member of the tubulin superfamily. This protein localizes to the centriolar sub-distal appendages that are associated with the older of the two centrioles after centrosome duplication. This protein plays a central role in organization of the microtubules during centriole duplication. A pseudogene of this gene is found on chromosome 5.[provided by RefSeq, Jan 2009]

Protein Families: Druggable Genome

Product images:



Coomassie blue staining of purified TUBE1 protein (Cat# [TP306165]). The protein was produced from HEK293T cells transfected with TUBE1 cDNA clone (Cat# [RC206165]) using MegaTran 2.0 (Cat# [TT210002]).