

Product datasheet for TP306165L

epsilon Tubulin (TUBE1) (NM_016262) Human Recombinant Protein

Product data:

| | |
|---------------------------------------|---------------------------------------------------------------|
| Product Type: | Recombinant Proteins |
| Description: | Recombinant protein of human tubulin, epsilon 1 (TUBE1), 1 mg |
| Species: | Human |
| Expression Host: | HEK293T |
| Expression cDNA Clone or AA Sequence: | >RC206165 protein sequence Red=Cloning site Green=Tags(s) |

MTQSVVVQVGQCGNQIGCCFWDLALREHAAVNQKGIYDEAISSFFRNVDTRVVGDDGGSISKGKICSLKAR
AVLIDMEEGVNEILQGPLRDVFDTKQLITDISGSGNNWAVGHKVFGLYQDQILEKFRKSAEHCDCLQC
FFIHSMGGGTGSGLGTFLLKVEDEFPEVYRFVTSIYPSGEDDVITSPYNSILAMKELNEHADCVLPID
NQSLFDIISKIDLMVNSGKLGTTVKPKSLVTSSSGALKKQHKKPFDAMNNIVANLLLNLTSARFEGSLN
MDLNEISMNLVFPQLHYLVSSLTPLYTLTDVNIPRRLDQMFSDAFSKDHQLLRADPKHSLYLACALMV
RGNVQISDLRRNIERLKPSLQFVSWNQEGWKTSLCSVPPVGHSHLLALANNTCVKPTFMELKERFMRLY
KKKAHLHHYLQVEGMEESCFTAVSSLSALIQEYDQLDATKNMPVQDLPRLSIAM

TRTRPLEQKLISEEDLAANDILDYKDDDDKV

| | |
|----------------|------------------------------------------------------------------------------------------------------------------------------------------------------|
| Tag: | C-Myc/DDK |
| Predicted MW: | 52.8 kDa |
| Concentration: | >0.05 µg/µL as determined by microplate BCA method |
| Purity: | > 80% as determined by SDS-PAGE and Coomassie blue staining |
| Buffer: | 25 mM Tris-HCl, 100 mM glycine, pH 7.3, 10% glycerol |
| Preparation: | Recombinant protein was captured through anti-DDK affinity column followed by conventional chromatography steps. |
| Note: | For testing in cell culture applications, please filter before use. Note that you may experience some loss of protein during the filtration process. |
| Storage: | Store at -80°C. |
| Stability: | Stable for 12 months from the date of receipt of the product under proper storage and handling conditions. Avoid repeated freeze-thaw cycles. |
| RefSeq: | NP_057346 |



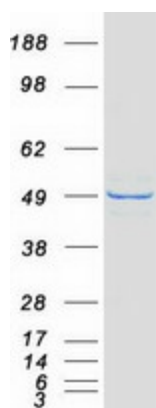
[View online »](#)

Locus ID: 51175
UniProt ID: [Q9UJT0](#)
RefSeq Size: 2314
Cytogenetics: 6q21
RefSeq ORF: 1425
Synonyms: dj142L7.2; TUBE

Summary: This gene encodes a member of the tubulin superfamily. This protein localizes to the centriolar sub-distal appendages that are associated with the older of the two centrioles after centrosome duplication. This protein plays a central role in organization of the microtubules during centriole duplication. A pseudogene of this gene is found on chromosome 5.[provided by RefSeq, Jan 2009]

Protein Families: Druggable Genome

Product images:



Coomassie blue staining of purified TUBE1 protein (Cat# [TP306165]). The protein was produced from HEK293T cells transfected with TUBE1 cDNA clone (Cat# [RC206165]) using MegaTran 2.0 (Cat# [TT210002]).