

Product datasheet for **TP306165**

epsilon Tubulin (TUBE1) (NM_016262) Human Recombinant Protein

Product data:

Product Type:	Recombinant Proteins
Description:	Recombinant protein of human tubulin, epsilon 1 (TUBE1), 20 µg
Species:	Human
Expression Host:	HEK293T
Expression cDNA Clone or AA Sequence:	>RC206165 protein sequence Red =Cloning site Green =Tags(s)
	<p>MTQSVVVQVGQCGNQIGCCFWDLALREHA AVNQGKIYDEAISSFFRNVDTRVVG DGG SISKGKICSLKAR AVLIDMEEGVNEILQGPLRDVFDTKQLITDISGSGNNWAVGHKVF GSYLQDQILEKFRKSAEHCDC LQC FFIHSMGGGTG SGLGTFLK VLEDEFVYRFVTSIYPSGEDDVITSPYNSILAMKELNEHADCVLPID NQSLFDIISKIDLMVNSGKLGTTVKPKSLVTSSSGALKKQHKKPFDAMNNIVANLLLNL TSSARFEGSLN MDLNEISMNLVFPQLHYLVSSLTPLYTLTDVNIPRRLDQMFSDAFSKDHQLLRADPKHSLYLACALMV RGNVQISDLRRNIERLKPSLQFVSWNQEGWKTSLSVPPVGHSHLLALANNTCVKPTFMELKERFMRLY KKKAHLHHYLQVEGMEESC FTEAVSSLSALIQEYDQLDATKNMPVQDLPRLSIAM</p> <p>TRTRPLEQKLISEEDLAANDILDYKDDDDKV</p>
Tag:	C-Myc/DDK
Predicted MW:	52.8 kDa
Concentration:	>0.05 µg/µL as determined by microplate BCA method
Purity:	> 80% as determined by SDS-PAGE and Coomassie blue staining
Buffer:	25 mM Tris-HCl, 100 mM glycine, pH 7.3, 10% glycerol
Preparation:	Recombinant protein was captured through anti-DDK affinity column followed by conventional chromatography steps.
Note:	For testing in cell culture applications, please filter before use. Note that you may experience some loss of protein during the filtration process.
Storage:	Store at -80°C.
Stability:	Stable for 12 months from the date of receipt of the product under proper storage and handling conditions. Avoid repeated freeze-thaw cycles.
RefSeq:	<u>NP_057346</u>



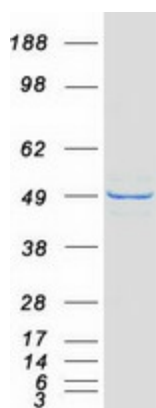
[View online »](#)

Locus ID: 51175
UniProt ID: [Q9UJT0](#)
RefSeq Size: 2314
Cytogenetics: 6q21
RefSeq ORF: 1425
Synonyms: dj142L7.2; TUBE

Summary: This gene encodes a member of the tubulin superfamily. This protein localizes to the centriolar sub-distal appendages that are associated with the older of the two centrioles after centrosome duplication. This protein plays a central role in organization of the microtubules during centriole duplication. A pseudogene of this gene is found on chromosome 5.[provided by RefSeq, Jan 2009]

Protein Families: Druggable Genome

Product images:



Coomassie blue staining of purified TUBE1 protein (Cat# TP306165). The protein was produced from HEK293T cells transfected with TUBE1 cDNA clone (Cat# [RC206165]) using MegaTran 2.0 (Cat# [TT210002]).