

Product datasheet for **TP306163M**

EXOC6 (NM_019053) Human Recombinant Protein

Product data:

| | |
|---------------------------------------|--|
| Product Type: | Recombinant Proteins |
| Description: | Recombinant protein of human exocyst complex component 6 (EXOC6), transcript variant 1, 100 µg |
| Species: | Human |
| Expression Host: | HEK293T |
| Expression cDNA Clone or AA Sequence: | >RC206163 protein sequence Red =Cloning site Green =Tags(s) |

MAENSESLGTVPEHERILQEIESTDTACVGPTLRSVYDDQPNAAHKKFMEKLDACIRNHDKEIEKMCNFHH
QGFVDAITELLKVRTDAEKLKVQVTDNRRFQDAGKEVIVHTEDIIRCRIQQRNITTVEKLQLCLPVLE
MYSKLKEQMSAKRYYSALKTMEQLENVYFPWVSQYRFCQLMIENLPKLREDIKEISMSDLKDFLESIRKH
SDKIGETAMKQAQHKTFSVSLQKQNKMKFGKNMYINRDRIPEERNETVLKHSLEEEDENEEIILTVQDL
VDFSPVYRCLHIYSVLGDEETFENYYRKQRKKQARLVLPQSNMHETVDGYRRYFTQIVGFFWVEDHILH
VTQGLVTRAYTDELWNMALSKIIAVLRAHSSYCTDPDLVLELKNLIVIFADTLQGYGFPVNRFLDLLFEI
RDQYNETLLKKWAGVFRDIFEEDNYSPIPVVNEEYKIVISKFPFQDPDLEKQSFPPKFPMSQSVPIHI
QVKEFIYASLKFSESLHRSSTEIDDMRLKSTNLLLTRLSSCLLNLRKPHIGLTELVIQIIINTTHLEQA
CKYLEDFITNITNISQETVHTTRLYGLSTFKDARHAAEGEYTKLNQKIDFVQLADYDWTMSEPDGRAS
GYLMDLINFLRSIFQVFTHLPKGVAQTACMSACQHLSTSLMQMLLDSELKQISMGAQQFNLDVIQCELF
ASSEVPVPGFQGDTLQLAFIDLRQLDLFMVWDWSTYLADYGQPASKYLRVNPNTALTLEKMKDTSKKN
N
IFAQFGKNDRDKQKLIETVVKQLRSLVNGMSQHM

TRTRPLEQKLISEEDLAANDILDYKDDDDKV

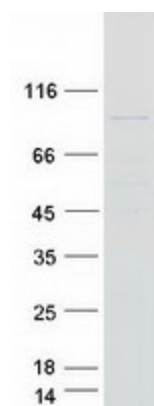
| | |
|----------------|--|
| Tag: | C-Myc/DDK |
| Predicted MW: | 93.5 kDa |
| Concentration: | >0.05 µg/µL as determined by microplate BCA method |
| Purity: | > 80% as determined by SDS-PAGE and Coomassie blue staining |
| Buffer: | 25 mM Tris-HCl, 100 mM glycine, pH 7.3, 10% glycerol |
| Preparation: | Recombinant protein was captured through anti-DDK affinity column followed by conventional chromatography steps. |



[View online »](#)

| | |
|----------------------|--|
| Note: | For testing in cell culture applications, please filter before use. Note that you may experience some loss of protein during the filtration process. |
| Storage: | Store at -80°C. |
| Stability: | Stable for 12 months from the date of receipt of the product under proper storage and handling conditions. Avoid repeated freeze-thaw cycles. |
| RefSeq: | NP_061926 |
| Locus ID: | 54536 |
| UniProt ID: | Q8TAG9 |
| RefSeq Size: | 3637 |
| Cytogenetics: | 10q23.33 |
| RefSeq ORF: | 2412 |
| Synonyms: | EXOC6A; SEC15; SEC15L; SEC15L1; SEC15L3; Sec15p |
| Summary: | The protein encoded by this gene is highly similar to the <i>Saccharomyces cerevisiae</i> SEC15 gene product, which is essential for vesicular traffic from the Golgi apparatus to the cell surface in yeast. It is one of the components of a multiprotein complex required for exocytosis. The 5' portion of this gene and two neighboring cytochrome p450 genes are included in a deletion that results in an autosomal-dominant form of nonsyndromic optic nerve aplasia (ONA). Alternative splicing and the use of alternative promoters results in multiple transcript variants. A paralogous gene encoding a similar protein is present on chromosome 2. [provided by RefSeq, Jan 2016] |

Product images:



Coomassie blue staining of purified EXOC6 protein (Cat# [TP306163]). The protein was produced from HEK293T cells transfected with EXOC6 cDNA clone (Cat# [RC206163]) using MegaTran 2.0 (Cat# [TT210002]).