

Product datasheet for TP306163L

EXOC6 (NM_019053) Human Recombinant Protein

Product data:

Product Type:	Recombinant Proteins
Description:	Recombinant protein of human exocyst complex component 6 (EXOC6), transcript variant 1, 1 mg
Species:	Human
Expression Host:	HEK293T
Expression cDNA Clone or AA Sequence:	>RC206163 protein sequence Red =Cloning site Green =Tags(s)

MAENSESLGTVPEHERILQEIESTDTACVGPTLRSVYDDQPNAAHKKFMEKLDACIRNHDKEIEKMCNFHH
 QGFVDAITELLKVRTDAEKLKVQVTDNRRFQDAGKEVIVHTEDIIRCRIQQRNITTVEKLQLCLPVLE
 MYSKLKEQMSAKRYYSALKTMEQLENVYFPWVSQYRQCQLMIENLPKLREDIKEISMSDLKDFLESIRKH
 SDKIGETAMKQAQHQTFSVSLQKQNKMKFGKNMYINRDRIPEERNETVLKHSLEEEDENEEIILTVQDL
 VDFSPVYRCLHIYSVLGDEETFENYYRKQRKKQARLVLPQSNMHETVDGYRRYFTQIVGFFWVEDHILH
 VTQGLVTRAYTDELWNMALSKIIAVLRAHSSYCTDPDLVLELKNLIVIFADTLQGYGFPVNRFLDLLFEI
 RDQYNETLLKKWAGVFRDIFEEDNYSPIPVVNEEYKIVISKFPFQDPDLEKQSFPPKFPMSQSVPHIYI
 QVKEFIYASLKFSESLHRSSTEIDDMLRKSTNLLLTRLSSCLLNLRKPHIGLTELVIINTTHLEQA
 CKYLEDFITNITNISQETVHTTRLYGLSTFKDARHAAEGEITYKLNQKIDEFVQLADYDWTMSEPDGRAS
 GYLMDLINFLRSIFQVFTHLPKGVAQTACMSACQHLSTSLMQMLLDSELKQISMGAQQFNLDVIQCELF
 ASSEVPVPGFQGDTLQLAFIDLRQLDLFMVWDWSTYLADYGQPASKYLRVNPNTALTLEKMKDTSKKN
 N
 IFAQFGKNDRDKQKLIETVVKQLRSLVNGMSQHM

TRTRPLEQKLISEEDLAANDILDYKDDDDKV

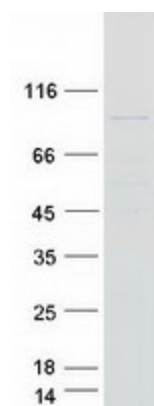
Tag:	C-Myc/DDK
Predicted MW:	93.5 kDa
Concentration:	>0.05 µg/µL as determined by microplate BCA method
Purity:	> 80% as determined by SDS-PAGE and Coomassie blue staining
Buffer:	25 mM Tris-HCl, 100 mM glycine, pH 7.3, 10% glycerol
Preparation:	Recombinant protein was captured through anti-DDK affinity column followed by conventional chromatography steps.



[View online »](#)

Note:	For testing in cell culture applications, please filter before use. Note that you may experience some loss of protein during the filtration process.
Storage:	Store at -80°C.
Stability:	Stable for 12 months from the date of receipt of the product under proper storage and handling conditions. Avoid repeated freeze-thaw cycles.
RefSeq:	NP_061926
Locus ID:	54536
UniProt ID:	Q8TAG9
RefSeq Size:	3637
Cytogenetics:	10q23.33
RefSeq ORF:	2412
Synonyms:	EXOC6A; SEC15; SEC15L; SEC15L1; SEC15L3; Sec15p
Summary:	The protein encoded by this gene is highly similar to the <i>Saccharomyces cerevisiae</i> SEC15 gene product, which is essential for vesicular traffic from the Golgi apparatus to the cell surface in yeast. It is one of the components of a multiprotein complex required for exocytosis. The 5' portion of this gene and two neighboring cytochrome p450 genes are included in a deletion that results in an autosomal-dominant form of nonsyndromic optic nerve aplasia (ONA). Alternative splicing and the use of alternative promoters results in multiple transcript variants. A paralogous gene encoding a similar protein is present on chromosome 2. [provided by RefSeq, Jan 2016]

Product images:



Coomassie blue staining of purified EXOC6 protein (Cat# [TP306163]). The protein was produced from HEK293T cells transfected with EXOC6 cDNA clone (Cat# [RC206163]) using MegaTran 2.0 (Cat# [TT210002]).