

## Product datasheet for **TP306135L**

### PLBD2 (NM\_173542) Human Recombinant Protein

#### Product data:

Product Type:	Recombinant Proteins
Description:	Purified recombinant protein of Homo sapiens phospholipase B domain containing 2 (PLBD2), 1 mg
Species:	Human
Expression Host:	HEK293T
Expression cDNA	>RC206135 protein sequence
Clone or AA Sequence:	Red=Cloning site Green=Tags(s)

MVGQMYCYPGSHLARALTRALALALVLALLVGPFLSGLAGAIAPAGGRWARDGQVPPASRSRSVLLDVSA  
GQLLMVDGRHPDAVAWANLTNAIRETGWAFLELGTSGQYNDLQAYAAGVVEAAVSEELIYMHWMTVWN  
YCGPFEYEVGYCERLKSFLLEANLEWMQEEMESNPDSYWHQVRLTLLQLKGLSDSYEGRVSFPAGKFTIK  
PLGFLLLQLSGDLEDLELALNKTIKPSLGSFGSCSALIKLLPGQSDLLVAHNTWNNYQHMLRVIKKYWLQ  
FREGPWGDYPLVPGNKLVFSSYPGTIFSCDDFYILGSGLVLETITIGNKNPALWKYVRRPGRVCVLEWVRNI  
VANRLASDGATWADIFKRFSNGTYNNQWMIVDYKAFIPGGPSPGSRVLTILEQIPGMVVVADKTSELYQK  
TYWASYNIPSFETVFNASGLQALVAQYGDWFSYDGPRAQIFRRNQSLVQDMDSMVRMLMRYNDFLHDPLS  
LCKACNPQPNGENAIARSDLNPANGSYPFKALRQRSHGGIDVKVTSMSLARILSLLAASGPTWDQVPPF  
QWSTSPFSGLLHMGQPDLWKFAPVKVSWD

TRTRPLEQKLISEEDLAANDILDYKDDDDKV

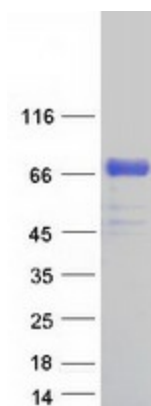
Tag:	C-Myc/DDK
Predicted MW:	61.3 kDa
Concentration:	>0.05 µg/µL as determined by microplate BCA method
Purity:	> 80% as determined by SDS-PAGE and Coomassie blue staining
Buffer:	25 mM Tris-HCl, 100 mM glycine, pH 7.3, 10% glycerol
Preparation:	Recombinant protein was captured through anti-DDK affinity column followed by conventional chromatography steps.
Note:	For testing in cell culture applications, please filter before use. Note that you may experience some loss of protein during the filtration process.
Storage:	Store at -80°C.



[View online »](#)

<b>Stability:</b>	Stable for 12 months from the date of receipt of the product under proper storage and handling conditions. Avoid repeated freeze-thaw cycles.
<b>RefSeq:</b>	<a href="#">NP_775813</a>
<b>Locus ID:</b>	196463
<b>UniProt ID:</b>	<a href="#">Q8NHP8</a>
<b>RefSeq Size:</b>	2832
<b>Cytogenetics:</b>	12q24.13
<b>RefSeq ORF:</b>	1767
<b>Synonyms:</b>	P76
<b>Summary:</b>	Putative phospholipase.[UniProtKB/Swiss-Prot Function]
<b>Protein Families:</b>	Transmembrane

### Product images:



Coomassie blue staining of purified PLBD2 protein (Cat# [TP306135]). The protein was produced from HEK293T cells transfected with PLBD2 cDNA clone (Cat# [RC206135]) using MegaTran 2.0 (Cat# [TT210002]).