

Product datasheet for **TP306126M**

ELMOD1 (NM_018712) Human Recombinant Protein

Product data:

Product Type:	Recombinant Proteins
Description:	Recombinant protein of human ELMO/CED-12 domain containing 1 (ELMOD1), transcript variant 1, 100 µg
Species:	Human
Expression Host:	HEK293T
Expression cDNA Clone or AA Sequence:	>RC206126 protein sequence Red =Cloning site Green =Tags(s)
	<p>MKHFLRMLIQVCLYFYCKFLWRCLKFMVRKLTGRCELQRICYNTKPGASRTMKIETSLRDSKSKLLQTSV SVHPDAIEKTIEDIMELKKINPDVNPQLGISLQACLLQIVGYRNLIADVEKLRREAYSDNPQHEEMLLK LWKFLKPNTPLESRISKQWCEIGFQGDDPKTDFRGMGLLGLYNLQYFAERDATAAQVLSDSLHPKCRDI TKEEISKFSKAWEKCRMDKAIGYSFAIVGINITDLAYNLLVSGALKTHFYNIAPEAPTLSHFQQTFCYL MHEFHKFWIEEDPMDIMEFNVRVREKFRKRIIKQLQNPDMALCPHFAASEGLINM</p> <p>TRTRPLEQKLISEEDLAANDILDYKDDDDKV</p>
Tag:	C-Myc/DDK
Predicted MW:	38.9 kDa
Concentration:	>0.05 µg/µL as determined by microplate BCA method
Purity:	> 80% as determined by SDS-PAGE and Coomassie blue staining
Buffer:	25 mM Tris-HCl, 100 mM glycine, pH 7.3, 10% glycerol
Preparation:	Recombinant protein was captured through anti-DDK affinity column followed by conventional chromatography steps.
Note:	For testing in cell culture applications, please filter before use. Note that you may experience some loss of protein during the filtration process.
Storage:	Store at -80°C.
Stability:	Stable for 12 months from the date of receipt of the product under proper storage and handling conditions. Avoid repeated freeze-thaw cycles.
RefSeq:	NP_061182
Locus ID:	55531



[View online »](#)

UniProt ID: [Q8N336](#)

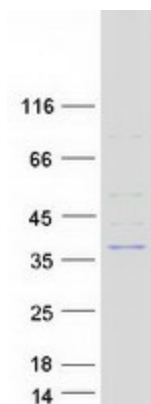
RefSeq Size: 3006

Cytogenetics: 11q22.3

RefSeq ORF: 1002

Summary: Acts as a GTPase-activating protein (GAP) toward guanine nucleotide exchange factors like ARL2, ARL3, ARF1 and ARF6, but not for GTPases outside the Arf family.[UniProtKB/Swiss-Prot Function]

Product images:



Coomassie blue staining of purified ELMOD1 protein (Cat# [TP306126]). The protein was produced from HEK293T cells transfected with ELMOD1 cDNA clone (Cat# [RC206126]) using MegaTran 2.0 (Cat# [TT210002]).