

## Product datasheet for **TP306124L**

### **KCNF1 (NM\_002236) Human Recombinant Protein**

#### **Product data:**

<b>Product Type:</b>	Recombinant Proteins
<b>Description:</b>	Recombinant protein of human potassium voltage-gated channel, subfamily F, member 1 (KCNF1), 1 mg
<b>Species:</b>	Human
<b>Expression Host:</b>	HEK293T
<b>Expression cDNA Clone or AA Sequence:</b>	>RC206124 protein sequence <b>Red</b> =Cloning site <b>Green</b> =Tags(s)

MDGSGERSLPEPGSQSSAASDDIEIVNVGGVRQVLYGDLLSQYPETRLAELINCLAGGYDTIFSLCDDY  
DPGKREFYFDRDPDAFKCVIEVYFGEVHMKKGICPICFKNEMDFWKVDLKFDDCCCKSHLSEKREELEE  
IARRVQLILDDLGVDAEGRWRRRCQKCVWKFLEKPESSCPARVAVLSFLLILVSSVVMCMGTIPELQVL  
DAEGNRVEHPTLENVETACIGWFTLEYLLRFLFSSPNKLFALSFMNIVDVLAILPFVSLTLTHLGARM  
ELTNVQQAVQALRIMRIARIFKLARHSSGLQTLTYALKRSFKELGLLLMYLAVGIFVFSALGYTMEQSHP  
ETLFKSIPQSFWWAITMTTVGYGDIYPKTTLGKLNAAISFLCGVIAIALPIHPIINNFVRYYNKQRVLE  
TAAKHELELMELNSSSGGEGKTGGSRSDDLNLPEPAGKEAPSCSSRLKLSHSDTFIPLLTEEKHHRTRL  
QSK

**TRTRPLEQKLISEEDLAANDILDYKDDDDKV**

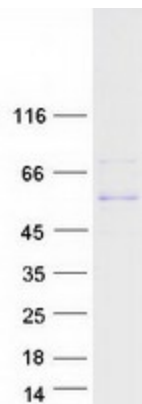
<b>Tag:</b>	C-Myc/DDK
<b>Predicted MW:</b>	55.4 kDa
<b>Concentration:</b>	>0.05 µg/µL as determined by microplate BCA method
<b>Purity:</b>	> 80% as determined by SDS-PAGE and Coomassie blue staining
<b>Buffer:</b>	25 mM Tris-HCl, 100 mM glycine, pH 7.3, 10% glycerol
<b>Preparation:</b>	Recombinant protein was captured through anti-DDK affinity column followed by conventional chromatography steps.
<b>Note:</b>	For testing in cell culture applications, please filter before use. Note that you may experience some loss of protein during the filtration process.
<b>Storage:</b>	Store at -80°C.



[View online »](#)

<b>Stability:</b>	Stable for 12 months from the date of receipt of the product under proper storage and handling conditions. Avoid repeated freeze-thaw cycles.
<b>RefSeq:</b>	<a href="#">NP_002227</a>
<b>Locus ID:</b>	3754
<b>UniProt ID:</b>	<a href="#">Q9H3M0</a>
<b>RefSeq Size:</b>	2304
<b>Cytogenetics:</b>	2p25.1
<b>RefSeq ORF:</b>	1482
<b>Synonyms:</b>	IK8; KCNF; kH1; KV5.1
<b>Summary:</b>	Voltage-gated potassium (Kv) channels represent the most complex class of voltage-gated ion channels from both functional and structural standpoints. Their diverse functions include regulating neurotransmitter release, heart rate, insulin secretion, neuronal excitability, epithelial electrolyte transport, smooth muscle contraction, and cell volume. This gene encodes a member of the potassium channel, voltage-gated, subfamily F. This gene is intronless and expressed in all tissues tested, including the heart, skeletal muscle, brain, kidney, and pancreas. [provided by RefSeq, Jul 2008]
<b>Protein Families:</b>	Druggable Genome, Ion Channels: Potassium, Transmembrane

### Product images:



Coomassie blue staining of purified KCNF1 protein (Cat# [TP306124]). The protein was produced from HEK293T cells transfected with KCNF1 cDNA clone (Cat# [RC206124]) using MegaTran 2.0 (Cat# [TT210002]).