

Product datasheet for **TP306124**

KCNF1 (NM_002236) Human Recombinant Protein

Product data:

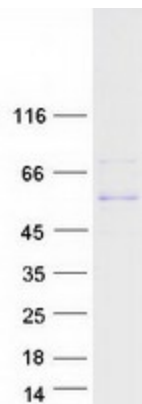
Product Type:	Recombinant Proteins
Description:	Recombinant protein of human potassium voltage-gated channel, subfamily F, member 1 (KCNF1), 20 µg
Species:	Human
Expression Host:	HEK293T
Expression cDNA Clone or AA Sequence:	>RC206124 protein sequence Red =Cloning site Green =Tags(s)
	 MDGSGERSLPEPGSQSSAASDDIEIVNVGGVRQVLYGDLLSQYPETRLAELINCLAGGYDTIFSLCDDY DPGKREFYFDRDPDAFKCVIEVYFGEVHMKKGICPICFKNEMDFWKVDLKFDDCCCKSHLSEKREELEE IARRVQLILDDLGVDAAEGRWRRRCQKCVWKFLEKPESSCPARVAVLSFLLILVSSVVMCMGTIPELQVL DAEGNRVEHPTLENVETACIGWFTLEYLLRFLFSSPNKLFALSFMNIVDVLAILPFVSLTLTHLGARM ELTNVQQAVQALRIMRIARIFKLARHSSGLQTLTYALKRSFKELGLLLMYLAVGIFVFSALGYTMEQSH ETLFKSIPQSFWWAITMTTVGYGDIYPKTTLGKLNAAISFLCGVIAIALPIHPIINNFVRYYNKQRVLE TAAKHELELMELNSSSGGEGKTGGSRSDDLNLPEPAGKEAPSCSSRLKLSHSDTFIPLLTEEKHHRTRL QSK TRTRPLEQKLISEEDLAANDILDYKDDDDKV
Tag:	C-Myc/DDK
Predicted MW:	55.4 kDa
Concentration:	>0.05 µg/µL as determined by microplate BCA method
Purity:	> 80% as determined by SDS-PAGE and Coomassie blue staining
Buffer:	25 mM Tris-HCl, 100 mM glycine, pH 7.3, 10% glycerol
Preparation:	Recombinant protein was captured through anti-DDK affinity column followed by conventional chromatography steps.
Note:	For testing in cell culture applications, please filter before use. Note that you may experience some loss of protein during the filtration process.
Storage:	Store at -80°C.



[View online »](#)

Stability:	Stable for 12 months from the date of receipt of the product under proper storage and handling conditions. Avoid repeated freeze-thaw cycles.
RefSeq:	NP_002227
Locus ID:	3754
UniProt ID:	Q9H3M0
RefSeq Size:	2304
Cytogenetics:	2p25.1
RefSeq ORF:	1482
Synonyms:	IK8; KCNF; kH1; KV5.1
Summary:	Voltage-gated potassium (Kv) channels represent the most complex class of voltage-gated ion channels from both functional and structural standpoints. Their diverse functions include regulating neurotransmitter release, heart rate, insulin secretion, neuronal excitability, epithelial electrolyte transport, smooth muscle contraction, and cell volume. This gene encodes a member of the potassium channel, voltage-gated, subfamily F. This gene is intronless and expressed in all tissues tested, including the heart, skeletal muscle, brain, kidney, and pancreas. [provided by RefSeq, Jul 2008]
Protein Families:	Druggable Genome, Ion Channels: Potassium, Transmembrane

Product images:



Coomassie blue staining of purified KCNF1 protein (Cat# TP306124). The protein was produced from HEK293T cells transfected with KCNF1 cDNA clone (Cat# [RC206124]) using MegaTran 2.0 (Cat# [TT210002]).