

## Product datasheet for TP306121M

### GOT1L1 (NM\_152413) Human Recombinant Protein

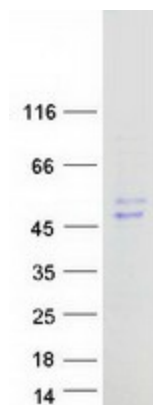
#### Product data:

Product Type:	Recombinant Proteins
Description:	Recombinant protein of human glutamic-oxaloacetic transaminase 1-like 1 (GOT1L1), 100 µg
Species:	Human
Expression Host:	HEK293T
Expression cDNA Clone or AA Sequence:	>RC206121 protein sequence <b>Red</b> =Cloning site <b>Green</b> =Tags(s)
	MPTLSVFM DVPLAHKLEGSLLKTYKQDDYPNKIFLAYRVCMTNEGHPWVSLVVQKTRLQISQDPSLNIEY LPTMGLKSF IQASLALLFGKHSQAIVENRVGGVHTVGD SGAFQLGVQFLRAWHKDARIVYIISSQKELHG LVFQDMGFTVYEYSVWDPKKLCMDPDILLNVEQIPHGCVLVMGNIIDCKLTPSGWAKLMSMIKSKQIFP FFDIPCQGLYTSGLEEDTRILQYFVSQGF EFFCSQSLSKNFGIYDEGVGMLVAVNNQQLLCVLSQLEG LAQALWLNPPNTGARVITSILCNPALLGEWKQSLKEWENIMLTKEKVKEKLQLLGTGPSWGHITEQSGT HGYLGLNSQQVEYLVRKKHIYIPKNGQINFSCINANNINYITEGINEAVLLTESSEMCLPKEKKTLLIGIK L
	<b>TRTRPLEQKLISEEDLAANDILDYKDDDDKV</b>
Tag:	C-Myc/DDK
Predicted MW:	47.1 kDa
Concentration:	>0.05 µg/µL as determined by microplate BCA method
Purity:	> 80% as determined by SDS-PAGE and Coomassie blue staining
Buffer:	25 mM Tris-HCl, 100 mM glycine, pH 7.3, 10% glycerol
Preparation:	Recombinant protein was captured through anti-DDK affinity column followed by conventional chromatography steps.
Note:	For testing in cell culture applications, please filter before use. Note that you may experience some loss of protein during the filtration process.
Storage:	Store at -80°C.
Stability:	Stable for 12 months from the date of receipt of the product under proper storage and handling conditions. Avoid repeated freeze-thaw cycles.
RefSeq:	<u><a href="#">NP_689626</a></u>



[View online »](#)

Locus ID: 137362  
UniProt ID: [Q8NHS2](#)  
RefSeq Size: 1390  
Cytogenetics: 8p11.23  
RefSeq ORF: 1263

**Product images:**

Coomassie blue staining of purified GOT1L1 protein (Cat# [TP306121]). The protein was produced from HEK293T cells transfected with GOT1L1 cDNA clone (Cat# [RC206121]) using MegaTran 2.0 (Cat# [TT210002]).