

Product datasheet for TP306117

PIWIL4 (NM_152431) Human Recombinant Protein

Product data:

Product Type:	Recombinant Proteins
Description:	Recombinant protein of human piwi-like 4 (Drosophila) (PIWIL4), 20 µg
Species:	Human
Expression Host:	HEK293T
Expression cDNA Clone or AA Sequence:	>RC206117 protein sequence Red =Cloning site Green =Tags(s)

MSGRRVVKARGIARSPSATEVGRIGASPLPRSVDLNNEASSSNGFLGTSRISTNDKYGISSGDAGSTFM
 ERGVKNKQDFMDLSICTREKLAHVRNCKTGSSGIPVKLVNLFNLDFPQDWQLYQYHVITYIPDLASRRLR
 IALLYSHSELSNKAKAFDGAIFLSQKLEEKVTELSSETQRGETIKMTITLKRELPSSSPVCIQVFNIF
 RKILKLSMYQIGRNFYNPSEPMEIPQHKLSLWPGFAISVSYFERKLLFSADVSYKVLNETVLEFMTAL
 CQRTGLSCFTQTCEKQLIGLIVLTRYNNRTYSIDDDWSVKPTHFTFQKRDGTEITYVDYKQYDITVSD
 LNQPMLVSLKKKRNDNSEAQLAHLIPELCFLTGLTDQATSDFQLMKAVAEKTRLSPSGRQQLARLVND
 IQRNTNARFELETWGLHFGSQISLTGRIVPSEKILMQDHICQPVSADWSKDIRTCKILNAQSLNTWLIL
 CSDRTEYVAESFLNCLRRVAGSMGFNVDPYKIIKVQENPAAFVRAIQYVDPDVQLVMCILPSNQKTYD
 SIKKYLSDDCPVPSQCVLARTLNKQGMMSIATKIAMQMTCKLGGELWAVEIPLKSLMVVGDIVCKDALS
 KDVMVVGCVASVNPRI TRWFSRCILQRTMTDVADCLKVFMTGALNKWYKYNHDLPARIIIVYRAGVGDGQ
 L
 KTLIEYVQPQLSSVAESSNTSSRSLVIVVRKKCMRFFTEMNRTVQNPPLGTVDSEATRNEWYDFYL
 ISQVACRGTVSPTYNVIYDDNGLKPDHMQRFTFKLCHLYNWP GIVSVPAPCQYAHKLTFLVAQSIHKE
 PSLELANHLFYL

TRTRPLEQKLISEEDLAANDILDYKDDDDKV

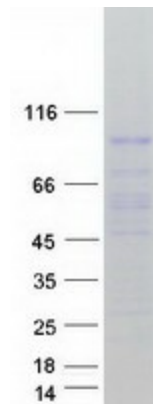
Tag:	C-Myc/DDK
Predicted MW:	96.4 kDa
Concentration:	>0.05 µg/µL as determined by microplate BCA method
Purity:	> 80% as determined by SDS-PAGE and Coomassie blue staining
Buffer:	25 mM Tris-HCl, 100 mM glycine, pH 7.3, 10% glycerol
Preparation:	Recombinant protein was captured through anti-DDK affinity column followed by conventional chromatography steps.



[View online »](#)

Note:	For testing in cell culture applications, please filter before use. Note that you may experience some loss of protein during the filtration process.
Storage:	Store at -80°C.
Stability:	Stable for 12 months from the date of receipt of the product under proper storage and handling conditions. Avoid repeated freeze-thaw cycles.
RefSeq:	NP_689644
Locus ID:	143689
UniProt ID:	Q7Z3Z4
RefSeq Size:	3214
Cytogenetics:	11q21
RefSeq ORF:	2556
Synonyms:	HIWI2; MIWI2
Summary:	PIWIL4 belongs to the Argonaute family of proteins, which function in development and maintenance of germline stem cells (Sasaki et al., 2003 [PubMed 12906857]).[supplied by OMIM, Mar 2008]
Protein Pathways:	Dorso-ventral axis formation

Product images:



Coomassie blue staining of purified PIWIL4 protein (Cat# TP306117). The protein was produced from HEK293T cells transfected with PIWIL4 cDNA clone (Cat# [RC206117]) using MegaTran 2.0 (Cat# [TT210002]).