

Product datasheet for TP306100L

Meis homeobox 3 (MEIS3) (NM_020160) Human Recombinant Protein

Product data:

Product Type:	Recombinant Proteins
Description:	Recombinant protein of human Meis homeobox 3 (MEIS3), transcript variant 1, 1 mg
Species:	Human
Expression Host:	HEK293T
Expression cDNA Clone or AA Sequence:	>RC206100 protein sequence Red =Cloning site Green =Tags(s)
	MARRYDELPHYPGIVDGPAAALASFPETVPAVPGPYGPHRPPQPLPPGLDSDGLKREKDEIYGHPLFPLLA LVFEKCELATCSPRDGAGAGLGTTPGGDVCSSDSFNEDIAAFKQVRSERPLFSSNPELDNLMIAIQVL RFHLLLEKVDLDCDNFCHRYITCLKGKMPIDLVIEDRDGGCREDFEDYPASCPSLPDQNNMWIRDHEDS GSVHLGTPGPSSGLASQSGDNSSDQGDGLDTSVASPSSGGEDEDLDQERRRNKKRGIFPKVATNIMRAW LFQHLSRRSEAPVLPDVCLGLGSPSPGPRWARPWGSDCGRPGRQSDSCWWLQHPYPSEEQKKQLAQDTGL TILQVNNWFINARRRIVQPMIDQSNRTGQGAAFSPEGQPIGGYTETQPHVAVRPPGSVGMSLNLEGEWHY L
	TRTRPLEQKLISEEDLAANDILDYKDDDDKV
Tag:	C-Myc/DDK
Predicted MW:	46 kDa
Concentration:	>0.05 µg/µL as determined by microplate BCA method
Purity:	> 80% as determined by SDS-PAGE and Coomassie blue staining
Buffer:	25 mM Tris-HCl, 100 mM glycine, pH 7.3, 10% glycerol
Preparation:	Recombinant protein was captured through anti-DDK affinity column followed by conventional chromatography steps.
Note:	For testing in cell culture applications, please filter before use. Note that you may experience some loss of protein during the filtration process.
Storage:	Store at -80°C.
Stability:	Stable for 12 months from the date of receipt of the product under proper storage and handling conditions. Avoid repeated freeze-thaw cycles.
RefSeq:	<u>NP_064545</u>



[View online »](#)

Locus ID: 56917

UniProt ID: [Q99687](#)

RefSeq Size: 2166

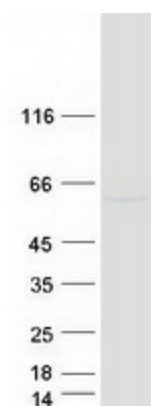
Cytogenetics: 19q13.32

RefSeq ORF: 1263

Synonyms: MRG2

Summary: This gene encodes a homeobox protein and probable transcriptional regulator. The orthologous protein in mouse controls expression of 3-phosphoinositide dependent protein kinase 1, which promotes survival of pancreatic beta-cells. [provided by RefSeq, Sep 2016]

Product images:



Coomassie blue staining of purified MEIS3 protein (Cat# [TP306100]). The protein was produced from HEK293T cells transfected with MEIS3 cDNA clone (Cat# [RC206100]) using MegaTran 2.0 (Cat# [TT210002]).