

Product datasheet for TP306096

MPP7 (NM_173496) Human Recombinant Protein

Product data:

Product Type:	Recombinant Proteins
Description:	Recombinant protein of human membrane protein, palmitoylated 7 (MAGUK p55 subfamily member 7) (MPP7), 20 µg
Species:	Human
Expression Host:	HEK293T
Expression cDNA Clone or AA Sequence:	>RC206096 protein sequence Red =Cloning site Green =Tags(s)

MPALSTGSGSDTGLYELLAALPAQLQPHVDSQEDLTLFLWDMFGEKSLHSLVKIHEKLHYYEKQSPVPIH
GAAALADDLAELQNKPLNSEIRELLKLLSKPNVKALLSVHDTVAQKNYDPVLPMPEDIDDEEDSVKII
RLVKNREPLGATIKKDEQTGAIVARIMRGGAADRSGLIHVGDELREVNIGIPVEDKRPEEIIQILAQSQG
AITFKIIPGSKEETPSKEGKMFIKALFDYNPNEKAIPCKEAGLSFKKGDILQIMSQDDATWWQAKHEAD
ANPRAGLIPSKHFQERRLALRRPEILVQPLKVSNRKSSGFRRSFRLSRDKKTNKSMYECKKSDQYDTAD
VPTYEEVTPYRRQTNEKYRLVVLVGPVGVGLNELKRKLLISDTQHYGVTVPHTTRARRSQESDGVYIFI
SKHLFETDVQNNKFIYGEYKNNYYGTSIDSVRSVLAKNKVCLLDVQPHTVKHLRLEFKPYVIFIKPPS
IERLRETRKNAKIISRDDQGAACPTEEDFQEMIKSAQIMESQYGHFLDKIIINDDLTVAFNELKTTFD
KLETETHWVPVSWLHS

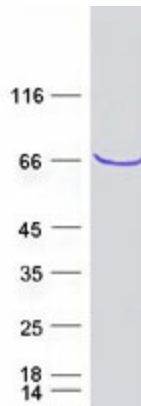
TRTRPLEQKLISEEDLAANDILDYKDDDDKV

Tag:	C-Myc/DDK
Predicted MW:	65.3 kDa
Concentration:	>0.05 µg/µL as determined by microplate BCA method
Purity:	> 80% as determined by SDS-PAGE and Coomassie blue staining
Buffer:	25 mM Tris-HCl, 100 mM glycine, pH 7.3, 10% glycerol
Preparation:	Recombinant protein was captured through anti-DDK affinity column followed by conventional chromatography steps.
Note:	For testing in cell culture applications, please filter before use. Note that you may experience some loss of protein during the filtration process.
Storage:	Store at -80°C.



[View online »](#)

Stability:	Stable for 12 months from the date of receipt of the product under proper storage and handling conditions. Avoid repeated freeze-thaw cycles.
RefSeq:	NP_775767
Locus ID:	143098
UniProt ID:	Q5T2T1
RefSeq Size:	5207
Cytogenetics:	10p12.1
RefSeq ORF:	1728
Summary:	The protein encoded by this gene is a member of the p55 Stardust family of membrane-associated guanylate kinase (MAGUK) proteins, which function in the establishment of epithelial cell polarity. This family member forms a complex with the polarity protein DLG1 (discs, large homolog 1) and facilitates epithelial cell polarity and tight junction formation. Polymorphisms in this gene are associated with variations in site-specific bone mineral density (BMD). Alternative splicing results in multiple transcript variants. [provided by RefSeq, Dec 2015]
Protein Families:	Druggable Genome

Product images:

Coomassie blue staining of purified MPP7 protein (Cat# TP306096). The protein was produced from HEK293T cells transfected with MPP7 cDNA clone (Cat# [RC206096]) using MegaTran 2.0 (Cat# [TT210002]).