

Product datasheet for **TP306087M**

KATNAL2 (NM_031303) Human Recombinant Protein

Product data:

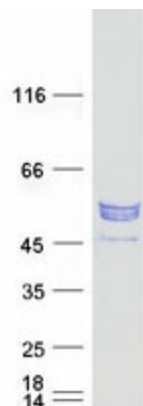
Product Type:	Recombinant Proteins
Description:	Recombinant protein of human katanin p60 subunit A-like 2 (KATNAL2), 100 µg
Species:	Human
Expression Host:	HEK293T
Expression cDNA Clone or AA Sequence:	>RC206087 protein sequence Red =Cloning site Green =Tags(s)
	<p>MEYESYFVKFQKYPKIVKKSSDTAENNLPQRSRGKTRMMNDSCQNLPKINQQRPRSKTTAGKTGDTKS LNKEHPNQEVVDNTRLENANFGLHISRIRKDSGEENAHPRRGQIIDFQGLLTDAIKGATSELALNTFDHN PDPSEKLLKPLSAFIGMNSEMRELAAVVSRDIYLNPNIKWNDIIGLDAKQLVKEAVVYPIRYPQLFTG ILSPWKGLLLYGPPGTGKTLAKAVATECKTFFNISASTIVSKWRGDSEKLVVLFELARYHAPSTIFL DELESVMSQRGTASGGEHEGSLRMKTELLVQMDGLARSEDLVFVLAASNLPWELDCAMLRRLKRLVLDL PSREARQAMIYHWLPPVSKSRALELHTELEYSVLSQETEGYSGSDIKLVCREAAMRPVRKIFDALENHQS ESSDLPRIQLDIVTTADFLDVLTHTKPSAKNLAQRYSDWQREFESV</p> <p>TRTRPLEQKLISEEDLAANDILDYKDDDDKV</p>
Tag:	C-Myc/DDK
Predicted MW:	52.6 kDa
Concentration:	>0.05 µg/µL as determined by microplate BCA method
Purity:	> 80% as determined by SDS-PAGE and Coomassie blue staining
Buffer:	25 mM Tris-HCl, 100 mM glycine, pH 7.3, 10% glycerol
Preparation:	Recombinant protein was captured through anti-DDK affinity column followed by conventional chromatography steps.
Note:	For testing in cell culture applications, please filter before use. Note that you may experience some loss of protein during the filtration process.
Storage:	Store at -80°C.
Stability:	Stable for 12 months from the date of receipt of the product under proper storage and handling conditions. Avoid repeated freeze-thaw cycles.
RefSeq:	<u>NP_112593</u>



[View online »](#)

Locus ID:	83473
UniProt ID:	Q8IYT4
RefSeq Size:	2850
Cytogenetics:	18q21.1
RefSeq ORF:	1398
Summary:	Severs microtubules in vitro in an ATP-dependent manner. This activity may promote rapid reorganization of cellular microtubule arrays.[UniProtKB/Swiss-Prot Function]

Product images:



Coomassie blue staining of purified KATNAL2 protein (Cat# [TP306087]). The protein was produced from HEK293T cells transfected with KATNAL2 cDNA clone (Cat# [RC206087]) using MegaTran 2.0 (Cat# [TT210002]).