

Product datasheet for **TP306075L**

WDR20 (NM_144574) Human Recombinant Protein

Product data:

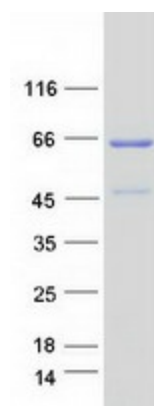
Product Type:	Recombinant Proteins
Description:	Recombinant protein of human WD repeat domain 20 (WDR20), transcript variant 2, 1 mg
Species:	Human
Expression Host:	HEK293T
Expression cDNA Clone or AA Sequence:	>RC206075 protein sequence Red =Cloning site Green =Tags(s)
	<p>MATEGGGKEMNEIKTQFTTREGLYKLLPHSEYSRPNRVPFNSQGSNPVRVSFVNLNDQSGNGDRLCFNV G RELYFYIKGVRKAADLSKPIDKRIYKGTQPTCHDFNHLTATAESVSLLVGFSAGQVQLIDPIKKETSKL FNEERLIDKSRVTCVKWVHGSESLFLVAHSSGNMYLYNVEHTCGTTAPHYQLLKQGESFAVHTCKSKSTR NPLLKWTVGEGALNEFAFSPDGKFLACVSQDGLRVFNFDSELHGTMKSYFGLLCVCWSPDGKYIVTG GEDDLVTWVSFVDCRVIARGHGHKSWWSVAFDPYTTSVEEGDPMEFSGSDEDFQDLLHFGRDRANSTQ S RLSKRNSTDSRPVSVTYRFGSVGQDTQLCLWDLTEDILFPHQPLSRARTHNTVMNATSPPAGSNGNSVTT PGNSVPPPLPRNSLPHSAVSNAGSKSSVMDGAIASGVSKFATLSLHDKRERHHEKDHKRNHSMGHISSK SSDKNLVTKTKTDPAKTLGTPLCPRMEDVPLLEPLICKIAHERLTVLIFLED CIVTACQEGFICTWGR PGKVVSFNP</p> <p>TRTRPLEQKLISEEDLAANDILDYKDDDDKV</p>
Tag:	C-Myc/DDK
Predicted MW:	62.7 kDa
Concentration:	>0.05 µg/µL as determined by microplate BCA method
Purity:	> 80% as determined by SDS-PAGE and Coomassie blue staining
Buffer:	25 mM Tris-HCl, 100 mM glycine, pH 7.3, 10% glycerol
Preparation:	Recombinant protein was captured through anti-DDK affinity column followed by conventional chromatography steps.
Note:	For testing in cell culture applications, please filter before use. Note that you may experience some loss of protein during the filtration process.
Storage:	Store at -80°C.



[View online »](#)

Stability:	Stable for 12 months from the date of receipt of the product under proper storage and handling conditions. Avoid repeated freeze-thaw cycles.
RefSeq:	<u>NP_653175</u>
Locus ID:	91833
UniProt ID:	<u>Q8TBZ3</u>
RefSeq Size:	2446
Cytogenetics:	14q32.31
RefSeq ORF:	1707
Synonyms:	Bun107; DMR
Summary:	This gene encodes a WD repeat-containing protein that functions to preserve and regulate the activity of the USP12-UAF1 deubiquitinating enzyme complex. Multiple alternatively spliced transcript variants have been found for this gene. [provided by RefSeq, Jun 2011]

Product images:



Coomassie blue staining of purified WDR20 protein (Cat# [TP306075]). The protein was produced from HEK293T cells transfected with WDR20 cDNA clone (Cat# [RC206075]) using MegaTran 2.0 (Cat# [TT210002]).