

Product datasheet for **TP306072M**

SCCPDH (NM_016002) Human Recombinant Protein

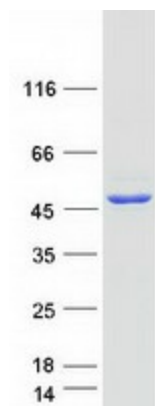
Product data:

Product Type:	Recombinant Proteins
Description:	Recombinant protein of human saccharopine dehydrogenase (putative) (SCCPDH), 100 µg
Species:	Human
Expression Host:	HEK293T
Expression cDNA Clone or AA Sequence:	>RC206072 protein sequence Red =Cloning site Green =Tags(s)
	<p>MATEQRPFHLLVFGASGFTGQFVTEEVAREQVDPERSRLPWAVAGRSREKLQRVLEKAALKLGRPTLSS EVGIIICDIANPASLDEMAKQATVWLNCVGPYRFYGEPIKACIENGASCIDISGEPQFLELMQLKYHEK AADKGVYIIGSSGFDSIPADLGVYTRNKMNGTLTAVESFLTIHSGHEGLSIHDGTWKSIAIYGFQDQSNL RKLNRVSNLKPVPLIGPKLRRWPISYCRELKGSIPFMGSDVSVRRTQRYLYENLEESPVQYAAAYTV GGITSVIKLMFAGLFFLFFVRFGRQLLIKFPWFFSFGYFSKQGPTQKQIDAASFTLTFFGQGYSRGTG TDKNKPNIKICTQVKGPEAGYVATPIAMVQAAMTLLSDASHLPKAGGVFTPGAASFSTKLIDRLNKHGIE FSVISSEV</p> <p>TRTRPLEQKLISEEDLAANDILDYKDDDDKV</p>
Tag:	C-Myc/DDK
Predicted MW:	47 kDa
Concentration:	>0.05 µg/µL as determined by microplate BCA method
Purity:	> 80% as determined by SDS-PAGE and Coomassie blue staining
Buffer:	25 mM Tris-HCl, 100 mM glycine, pH 7.3, 10% glycerol
Preparation:	Recombinant protein was captured through anti-DDK affinity column followed by conventional chromatography steps.
Note:	For testing in cell culture applications, please filter before use. Note that you may experience some loss of protein during the filtration process.
Storage:	Store at -80°C.
Stability:	Stable for 12 months from the date of receipt of the product under proper storage and handling conditions. Avoid repeated freeze-thaw cycles.
RefSeq:	<u>NP_057086</u>



[View online »](#)

Locus ID:	51097
UniProt ID:	Q8NBX0 , A0A384NPM7
RefSeq Size:	2482
Cytogenetics:	1q44
RefSeq ORF:	1287
Synonyms:	CGI-49; NET11
Protein Families:	Transmembrane

Product images:

Coomassie blue staining of purified SCCPDH protein (Cat# [TP306072]). The protein was produced from HEK293T cells transfected with SCCPDH cDNA clone (Cat# [RC206072]) using MegaTran 2.0 (Cat# [TT210002]).