

## Product datasheet for **TP306072**

### SCCPDH (NM\_016002) Human Recombinant Protein

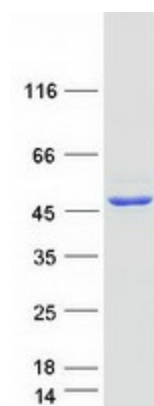
#### Product data:

Product Type:	Recombinant Proteins
Description:	Recombinant protein of human saccharopine dehydrogenase (putative) (SCCPDH), 20 µg
Species:	Human
Expression Host:	HEK293T
Expression cDNA Clone or AA Sequence:	>RC206072 protein sequence <b>Red</b> =Cloning site <b>Green</b> =Tags(s)
	<p>MATEQRPFHLVVFASGFTGQFVTEEVAREQVDPERSRLPWAVAGRSREKLQRVLEKAALKLGRPTLSS EVGIIICDIANPASLDEMAKQATVWLNCVGPYRFYGEPIKACIENGASCIDISGEPQFLELMQLKYHEK AADKGVYIIGSSGFDSIPADLGVIYTRNKMNGTLTAVESFLTIHSGHEGLSIHDGTWKSIAIYGFQDQSNL RKLNRVSNLKPVPLIGPKLRRWPISYCRELKGSIPFMGSDSVVRRRTQRYLYENLEESPVQYAAAYTV GGITSVIKLMFAGLFFLFFVRFGRQLLIKFPWFFSFGYFSKQGPTQKQIDAASFTLTFFGQGYSRGTG TDKNKPNIKICTQVKGPEAGYVATPIAMVQAAMTLLSDASHLPKAGGVFTPGAASFSTKLIDRLNKHGIE FSVISSEV</p> <p><b>TRTRPLEQKLISEEDLAANDILDYKDDDDKV</b></p>
Tag:	C-Myc/DDK
Predicted MW:	47 kDa
Concentration:	>0.05 µg/µL as determined by microplate BCA method
Purity:	> 80% as determined by SDS-PAGE and Coomassie blue staining
Buffer:	25 mM Tris-HCl, 100 mM glycine, pH 7.3, 10% glycerol
Preparation:	Recombinant protein was captured through anti-DDK affinity column followed by conventional chromatography steps.
Note:	For testing in cell culture applications, please filter before use. Note that you may experience some loss of protein during the filtration process.
Storage:	Store at -80°C.
Stability:	Stable for 12 months from the date of receipt of the product under proper storage and handling conditions. Avoid repeated freeze-thaw cycles.
RefSeq:	<u><a href="#">NP_057086</a></u>



[View online »](#)

Locus ID:	51097
UniProt ID:	<a href="#">Q8NBX0</a> , <a href="#">A0A384NPM7</a>
RefSeq Size:	2482
Cytogenetics:	1q44
RefSeq ORF:	1287
Synonyms:	CGI-49; NET11
Protein Families:	Transmembrane

**Product images:**

Coomassie blue staining of purified SCCPDH protein (Cat# TP306072). The protein was produced from HEK293T cells transfected with SCCPDH cDNA clone (Cat# [RC206072]) using MegaTran 2.0 (Cat# [TT210002]).