

Product datasheet for **TP306071L**

RO60 (NM_001042370) Human Recombinant Protein

Product data:

Product Type:	Recombinant Proteins
Description:	Recombinant protein of human TROVE domain family, member 2 (TROVE2), transcript variant 3, 1 mg
Species:	Human
Expression Host:	HEK293T
Expression cDNA Clone or AA Sequence:	>RC206071 protein sequence Red =Cloning site Green =Tags(s)

MEESVNQMQLNEKQIANSQDGYVWQVTD MNRLHRFLCFGSEGGTYI KEQKLGLENAEALIRLIEDGRG
CEVIQEIKSFSQEGRTTKQEPMLFALAICSQCSDISTKQAAFKA VSEVCRIPTHLFTFIQFKKDLKESMK
CGMWGRALRKAIADWYNEKGGMALALAVTKYKQRNGWSHKDLLRLSHLKPSS EGLAIVTKYITKGWKEVH
ELYKEKALSVETEKLLKYLEAVEKVKRTRDELEVIHLIEEHRLVREHLLTNHLKSKEVWKALLQEMPLTA
LLRNLGKMTANSVLEPGNSEVSLVCEKLCNEKLLKKARIHPFHILIALETYKTGHGLRGK LKWRPDEEIL
KALDAAFYKTFKTVEPTGKRFLAVDVSASMNQ RVLGSILNASTVAAAMCMVVTRTEKDSYVVAFSDEM V
PCPVTTDMTLQQVLMAMSQIPAGGTDCSLPMIWAQKTNTPADVFIVFTDNETFAGG VHPAIALREYRKMM
DIPAKLIVCGMTSNGFTIADPDDRGM LDMCGFDTGALDVIRNFTLDMI

TRTRPLEQKLISEEDLAANDILDYKDDDDKV

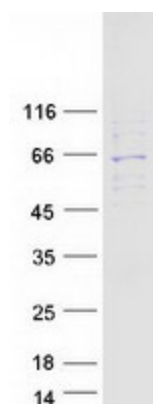
Tag:	C-Myc/DDK
Predicted MW:	60 kDa
Concentration:	>0.05 µg/µL as determined by microplate BCA method
Purity:	> 80% as determined by SDS-PAGE and Coomassie blue staining
Buffer:	25 mM Tris-HCl, 100 mM glycine, pH 7.3, 10% glycerol
Preparation:	Recombinant protein was captured through anti-DDK affinity column followed by conventional chromatography steps.
Note:	For testing in cell culture applications, please filter before use. Note that you may experience some loss of protein during the filtration process.
Storage:	Store at -80°C.



[View online »](#)

Stability:	Stable for 12 months from the date of receipt of the product under proper storage and handling conditions. Avoid repeated freeze-thaw cycles.
RefSeq:	NP_001035829
Locus ID:	6738
UniProt ID:	P10155
RefSeq Size:	2091
Cytogenetics:	1q31.2
RefSeq ORF:	1617
Synonyms:	RORNPN; SSA2; TROVE2
Summary:	RNA-binding protein that binds to misfolded non-coding RNAs, pre-5S rRNA, and several small cytoplasmic RNA molecules known as Y RNAs. May stabilize some of these RNAs and protect them from degradation (PubMed:18056422). Binds to endogenous Alu retroelements which are induced by type I interferon and stimulate porinflammatoary cytokine secretion. Regulates the expression of Alu retroelements as well as inflammatory genes (PubMed:26382853). [UniProtKB/Swiss-Prot Function]
Protein Families:	Transcription Factors
Protein Pathways:	Systemic lupus erythematosus

Product images:



Coomassie blue staining of purified RO60 protein (Cat# [TP306071]). The protein was produced from HEK293T cells transfected with RO60 cDNA clone (Cat# [RC206071]) using MegaTran 2.0 (Cat# [TT210002]).