

## Product datasheet for TP306063

### GUCY1A1 (NM\_000856) Human Recombinant Protein

#### Product data:

Product Type:	Recombinant Proteins
Description:	Recombinant protein of human guanylate cyclase 1, soluble, alpha 3 (GUCY1A3), transcript variant 1, 20 µg
Species:	Human
Expression Host:	HEK293T
Expression cDNA Clone or AA Sequence:	>RC206063 protein sequence <b>Red</b> =Cloning site <b>Green</b> =Tags(s)

MFCTKLDLKITGECPFSLAPGQVPNESSEEAAGSSESCKATMPICQDIPEKNIQESLPQRKTSRSRVY  
LHTLAESICKLIFPEFERLNVALQRTLAKHKIKESRKSLEREDFEKTIAEQAVAAGVPVEVIKESLGEEV  
FKICYEEDENILGVGGTLKDFLNSFSTLLKQSSHCQEAGKRGRLEDASILCLDKEDDFLHVYFFPKRT  
TSLILPGIIKAAAHVLYETEVEVSLMPPCFHNDCEFEVNPYLLYSVHMKSTKPSLSPSKPQSSLVIPTS  
LFCKTFPFHFMFDKDMTILQFGNGIRRLMNRDFQGKPNFEEYFEILTPKINQTFSGIMTMLNMQFVVRV  
RRWDNSVKKSSRVMDLKGQMIYIVESSAILFLGSPCVDRLEDFTGRGLYLSDIPIHNALRDVVLIGEQR  
AQDGLKRLGKLKATLEQAHQALEEEKKTVDLLCSIFPCEVAQQLWQGQVQAKKFSNVTMLFSDIVGF  
TAICSQCSPLQVITMLNLYTRFDQQCGLDQVYKQVETIGDAYCVAGGLHKESTDHAVQIALMAVKMMELS  
DEVMSPHGEPIKMRIGLHSGSVFAGVVGKMPRYCLFGNNVTLANKFESCSVPRKINVSPPTYRLLKDCP  
GFVFTPRSREELPPNFPSEIPGICHFLDAYQQGTNSKPCFQKKDVEDGNANFLGKASGID

**TRTRPLEQKLISEEDLAANDILDYKDDDDKV**

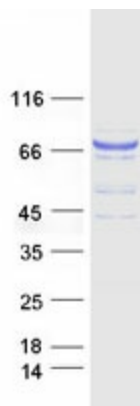
Tag:	C-Myc/DDK
Predicted MW:	77.3 kDa
Concentration:	>0.05 µg/µL as determined by microplate BCA method
Purity:	> 80% as determined by SDS-PAGE and Coomassie blue staining
Buffer:	25 mM Tris-HCl, 100 mM glycine, pH 7.3, 10% glycerol
Preparation:	Recombinant protein was captured through anti-DDK affinity column followed by conventional chromatography steps.
Note:	For testing in cell culture applications, please filter before use. Note that you may experience some loss of protein during the filtration process.
Storage:	Store at -80°C.



[View online »](#)

<b>Stability:</b>	Stable for 12 months from the date of receipt of the product under proper storage and handling conditions. Avoid repeated freeze-thaw cycles.
<b>RefSeq:</b>	<a href="#">NP_000847</a>
<b>Locus ID:</b>	2982
<b>UniProt ID:</b>	<a href="#">Q02108</a>
<b>RefSeq Size:</b>	9454
<b>Cytogenetics:</b>	4q32.1
<b>RefSeq ORF:</b>	2070
<b>Synonyms:</b>	GC-S-alpha-1; GC-SA3; GCS-alpha-3; GUC1A3; GUCA3; GUCSA3; GUCY1A3; MYMY6
<b>Summary:</b>	Soluble guanylate cyclases are heterodimeric proteins that catalyze the conversion of GTP to 3',5'-cyclic GMP and pyrophosphate. The protein encoded by this gene is an alpha subunit of this complex and it interacts with a beta subunit to form the guanylate cyclase enzyme, which is activated by nitric oxide. Several transcript variants encoding a few different isoforms have been found for this gene. [provided by RefSeq, Jan 2012]
<b>Protein Families:</b>	Druggable Genome
<b>Protein Pathways:</b>	Gap junction, Long-term depression, Purine metabolism, Vascular smooth muscle contraction

### Product images:



Coomassie blue staining of purified GUCY1A1 protein (Cat# TP306063). The protein was produced from HEK293T cells transfected with GUCY1A1 cDNA clone (Cat# [RC206063]) using MegaTran 2.0 (Cat# [TT210002]).