

## Product datasheet for **TP306053M**

### PMP2 (NM\_002677) Human Recombinant Protein

#### Product data:

Product Type:	Recombinant Proteins
Description:	Recombinant protein of human peripheral myelin protein 2 (PMP2), 100 µg
Species:	Human
Expression Host:	HEK293T
Expression cDNA Clone or AA Sequence:	>RC206053 protein sequence <b>Red</b> =Cloning site <b>Green</b> =Tags(s)
	 MSNKFLGTWKLVSSENFDDYMKALGVGLATRKLGNLAKPTVIISKKGDIIIRTESTFKNTEISFKLGQE FEETTADNRKTKSIVTLQRGSLNQVQRWDGKETTIRKRLVNGKMVAECKMKGVVCTRIYEKV  <b>TRTRPLEQKLISEEDLAANDILDYKDDDDKV</b>
Tag:	C-Myc/DDK
Predicted MW:	14.7 kDa
Concentration:	>0.05 µg/µL as determined by microplate BCA method
Purity:	> 80% as determined by SDS-PAGE and Coomassie blue staining
Buffer:	25 mM Tris-HCl, 100 mM glycine, pH 7.3, 10% glycerol
Preparation:	Recombinant protein was captured through anti-DDK affinity column followed by conventional chromatography steps.
Note:	For testing in cell culture applications, please filter before use. Note that you may experience some loss of protein during the filtration process.
Storage:	Store at -80°C.
Stability:	Stable for 12 months from the date of receipt of the product under proper storage and handling conditions. Avoid repeated freeze-thaw cycles.
RefSeq:	<a href="#">NP_002668</a>
Locus ID:	5375
UniProt ID:	<a href="#">P02689</a>
RefSeq Size:	3579
Cytogenetics:	8q21.13



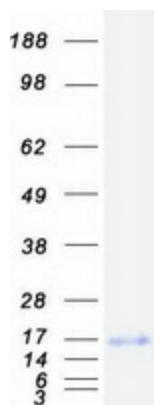
[View online »](#)

RefSeq ORF: 396

Synonyms: CMT1G; FABP8; M-FABP; MP2; P2

Summary: The protein encoded by this gene localizes to myelin sheaths of the peripheral nervous system. The encoded protein can bind both the membrane layers of the sheaths and monomeric lipids, and is thought to provide stability to the sheath. A defect in this gene was shown to be a cause of dominant demyelinating CMT neuropathy. [provided by RefSeq, Jan 2017]

### Product images:



Coomassie blue staining of purified PMP2 protein (Cat# [TP306053]). The protein was produced from HEK293T cells transfected with PMP2 cDNA clone (Cat# [RC206053]) using MegaTran 2.0 (Cat# [TT210002]).