

Product datasheet for **TP306021L**

APPL (APPL1) (NM_012096) Human Recombinant Protein

Product data:

| | |
|-----------------------|--|
| Product Type: | Recombinant Proteins |
| Description: | Recombinant protein of human adaptor protein, phosphotyrosine interaction, PH domain and leucine zipper containing 1 (APPL1), 1 mg |
| Species: | Human |
| Expression Host: | HEK293T |
| Expression cDNA | >RC206021 protein sequence |
| Clone or AA Sequence: | Red=Cloning site Green=Tags(s) |

MPGIDKLPHEETLEDSPQTRSLGVEEDATAISNYMNQLYQAMHRIYDAQNELSAATHLTSKLLKEYEK
QRFPGLGGDDEVMSSTLQQFSKVIDELSSCHAVLSTQLADAMMFITQFKERDLKEILTLKEVFQIASNDH
DAAINRYSRLSKKRENDKVKYEVTEDEVYTSRKKQHQTMMHYFCALNTLQYKPKIALLEPLLGYMQAQISF
FKMGSENLNEQLEEFANIGTQSVQNVREMSDIETMQQTIEDLEVASDPLYVPDPDPTKFPVNRNLTRK
AGYLNARNKTGLVSSTWDRQFYFTQGGNLMSQARGDVAGGLAMDIDNCSVMAVDCEDRRYCFQITSFDGK
KSSILQAESKKDHEEWICTINNISKQIYLSNPEETAARVNQSALEAVTPSPSFQQRHESLRPAAGQSRP
PTARTSSSGSLGSESTNLAALSLDSLVPDTPIQFDIISPVCEQPGQAKAFGGRRTPFGESGGSTK
SETEDSILHQLFIVRFLGSMVEVKSDDHPDVVYETMRQILAAARAIHNIFRMTESHLLVTCCLKLIDPQTQ
VTRLTFPLPCVWLYATHQENKRLFGFVLRSSGRSENLSSVCYIFESNNEGEKICDSVGLAKQIALHAE
LDRRASEKQKEIERVKEKQKQKELNKQKQIEKDLEEQSRLIAASSRPNQASSEGGFVLLSSSQSEESDLGE
GGKKRESEA

TRTRPLEQKLISEEDLAANDILDYKDDDDKV

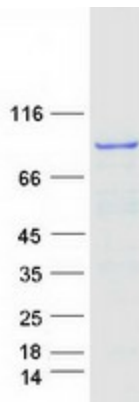
| | |
|----------------|--|
| Tag: | C-Myc/DDK |
| Predicted MW: | 79.5 kDa |
| Concentration: | >0.05 µg/µL as determined by microplate BCA method |
| Purity: | > 80% as determined by SDS-PAGE and Coomassie blue staining |
| Buffer: | 25 mM Tris-HCl, 100 mM glycine, pH 7.3, 10% glycerol |
| Preparation: | Recombinant protein was captured through anti-DDK affinity column followed by conventional chromatography steps. |
| Note: | For testing in cell culture applications, please filter before use. Note that you may experience some loss of protein during the filtration process. |



[View online »](#)

| | |
|--------------------------|--|
| Storage: | Store at -80°C. |
| Stability: | Stable for 12 months from the date of receipt of the product under proper storage and handling conditions. Avoid repeated freeze-thaw cycles. |
| RefSeq: | NP_036228 |
| Locus ID: | 26060 |
| UniProt ID: | Q9UKG1 |
| RefSeq Size: | 6061 |
| Cytogenetics: | 3p14.3 |
| RefSeq ORF: | 2127 |
| Synonyms: | APPL; DIP13alpha; MODY14 |
| Summary: | The protein encoded by this gene has been shown to be involved in the regulation of cell proliferation, and in the crosstalk between the adiponectin signalling and insulin signalling pathways. The encoded protein binds many other proteins, including RAB5A, DCC, AKT2, PIK3CA, adiponectin receptors, and proteins of the NuRD/MeCP1 complex. This protein is found associated with endosomal membranes, but can be released by EGF and translocated to the nucleus. [provided by RefSeq, Jul 2008] |
| Protein Pathways: | Colorectal cancer, Pathways in cancer |

Product images:



Coomassie blue staining of purified APPL1 protein (Cat# [TP306021]). The protein was produced from HEK293T cells transfected with APPL1 cDNA clone (Cat# [RC206021]) using MegaTran 2.0 (Cat# [TT210002]).