

Product datasheet for TP306018M

TPTE (NM_199259) Human Recombinant Protein

Product data:

Product Type:	Recombinant Proteins
Description:	Recombinant protein of human transmembrane phosphatase with tensin homology (TPTE), transcript variant 2, 100 µg
Species:	Human
Expression Host:	HEK293T
Expression cDNA Clone or AA Sequence:	>RC206018 protein sequence Red =Cloning site Green =Tags(s)

MNESPDPDLAGVIIELGPNDSPQTSEFKGATEEAPAKESVLARLSKFEVEDAENVASYDSKIKKIVHSI
VSSFAFGLFGVFLVLLDVTLLADLIFTDSKLYIPLEYRSISLAIALFFLMDVLLRVFVRRQQYFSDLF
NILDTAIIVILLVVDVYIFFDIKLLRNIPRWITHLLRLLRIILLRIFHLFHQKRQLEKLIRRRVSENKR
RYTRDGFDLDLTYVTERIIAMSFSSGRQSFYRNPIKEVVRFLDKKHRNHRYVYNLCSERAYDPKHFHNR
VVRIMIDDHNVPTLHQMVVFTKEVNEWMAQDLENIVAIHCKGGTDRTGTMVCAFLIASEICSTAKESLYY
FGERRTDKTHSEKFQGVETPSQKRYVAYFAQVKHLYNWNLPPIRILFIKHFIYSIPRYVRDLKIQIEME
KKVVFSTISLGKCSVLDNITTDKILIDVFDGPPLYDDVKVQFFYSNLPTYDNCSEFYFWLHTSFIENNRL
YLPKNELDNLHKQKARRIYPSDFAVEILFGEKMTSSDVGASD

TRTRPLEQKLISEEDLAANDILDYKDDDDKV

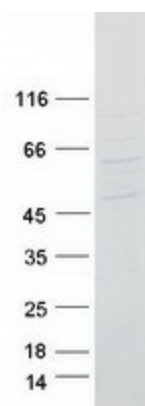
Tag:	C-Myc/DDK
Predicted MW:	62.3 kDa
Concentration:	>0.05 µg/µL as determined by microplate BCA method
Purity:	> 80% as determined by SDS-PAGE and Coomassie blue staining
Buffer:	25 mM Tris-HCl, 100 mM glycine, pH 7.3, 10% glycerol
Preparation:	Recombinant protein was captured through anti-DDK affinity column followed by conventional chromatography steps.
Note:	For testing in cell culture applications, please filter before use. Note that you may experience some loss of protein during the filtration process.
Storage:	Store at -80°C.



[View online »](#)

Stability:	Stable for 12 months from the date of receipt of the product under proper storage and handling conditions. Avoid repeated freeze-thaw cycles.
RefSeq:	NP_954868
Locus ID:	7179
UniProt ID:	P56180
RefSeq Size:	2711
Cytogenetics:	21p11.2
RefSeq ORF:	1599
Synonyms:	CT44; PTEN2
Summary:	This gene encodes a PTEN-related tyrosine phosphatase which may play a role in the signal transduction pathways of the endocrine or spermatogenic function of the testis. Alternative splicing results in multiple transcript variants. [provided by RefSeq, Mar 2014]
Protein Families:	Druggable Genome, Transmembrane

Product images:



Coomassie blue staining of purified TPTE protein (Cat# [TP306018]). The protein was produced from HEK293T cells transfected with TPTE cDNA clone (Cat# [RC206018]) using MegaTran 2.0 (Cat# [TT210002]).