

## Product datasheet for **TP306018**

### TPTE (NM\_199259) Human Recombinant Protein

#### Product data:

Product Type:	Recombinant Proteins
Description:	Recombinant protein of human transmembrane phosphatase with tensin homology (TPTE), transcript variant 2, 20 µg
Species:	Human
Expression Host:	HEK293T
Expression cDNA Clone or AA Sequence:	>RC206018 protein sequence <b>Red</b> =Cloning site <b>Green</b> =Tags(s)

MNESPDPDLAGVIIELGPNDSPQTSEFKGATEEAPAKESVLARLSKFEVEDAENVASYDSKIKKIVHSI  
VSSFAFGLFGVFLVLLDVTLLADLIFTDSKLYIPLEYRSISLAIALFFLMDVLLRVFVERRQQYFSDLF  
NILDTAIIVILLVVDVYIFFDIKLLRNIPRWITHLLRLLRIILLRIFHLFHQKRQLEKLIRRRVSENKR  
RYTRDGFDLTLTYVTERIIAMSFSSGRQSFYRNPIKEVVRFLDKKHRNHRYVYNLCSERAYDPKHFHNR  
VVRIMIDDHNVPTLHQMVVFTKEVNEWMAQDLENIVAIHCKGGTDRTGTMVCAFLIASEICSTAKESLYY  
FGERRTDKTHSEKFQGVETPSQKRYVAYFAQVKHLYNWNLP PRRILFIKHFIYSIPRYVRDLKIQIEME  
KKVVFSTISLGKCSVLDNITTDKILIDVFDGPPLYDDVKVQFFYSNLPTYDNC SFYFWLHTSFIENNRL  
YLPKNELDNLHKQKARRIYPSDFAVEILFGEKMTSSDVVAGSD

**TRTRPLEQKLISEEDLAANDILDYKDDDDKV**

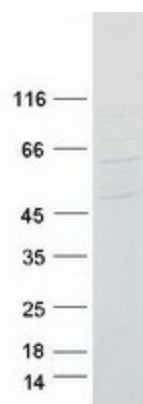
Tag:	C-Myc/DDK
Predicted MW:	62.3 kDa
Concentration:	>0.05 µg/µL as determined by microplate BCA method
Purity:	> 80% as determined by SDS-PAGE and Coomassie blue staining
Buffer:	25 mM Tris-HCl, 100 mM glycine, pH 7.3, 10% glycerol
Preparation:	Recombinant protein was captured through anti-DDK affinity column followed by conventional chromatography steps.
Note:	For testing in cell culture applications, please filter before use. Note that you may experience some loss of protein during the filtration process.
Storage:	Store at -80°C.



[View online »](#)

<b>Stability:</b>	Stable for 12 months from the date of receipt of the product under proper storage and handling conditions. Avoid repeated freeze-thaw cycles.
<b>RefSeq:</b>	<a href="#">NP_954868</a>
<b>Locus ID:</b>	7179
<b>UniProt ID:</b>	<a href="#">P56180</a>
<b>RefSeq Size:</b>	2711
<b>Cytogenetics:</b>	21p11.2
<b>RefSeq ORF:</b>	1599
<b>Synonyms:</b>	CT44; PTEN2
<b>Summary:</b>	This gene encodes a PTEN-related tyrosine phosphatase which may play a role in the signal transduction pathways of the endocrine or spermatogenic function of the testis. Alternative splicing results in multiple transcript variants. [provided by RefSeq, Mar 2014]
<b>Protein Families:</b>	Druggable Genome, Transmembrane

### Product images:



Coomassie blue staining of purified TPTE protein (Cat# TP306018). The protein was produced from HEK293T cells transfected with TPTE cDNA clone (Cat# [RC206018]) using MegaTran 2.0 (Cat# [TT210002]).