

## Product datasheet for TP306001M

### SERINC1 (NM\_020755) Human Recombinant Protein

#### Product data:

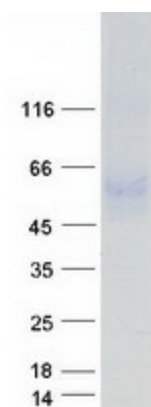
Product Type:	Recombinant Proteins
Description:	Recombinant protein of human serine incorporator 1 (SERINC1), 100 µg
Species:	Human
Expression Host:	HEK293T
Expression cDNA Clone or AA Sequence:	>RC206001 protein sequence <b>Red</b> =Cloning site <b>Green</b> =Tags(s)
	<p>MGSVLGLCSMASWIPCLCGSAPCLLCRCCPSGNNSTVTRLIYALFLLVGVCVACVMLIPGMEEQLNKIPG FCENEKGVVPCNILVGKAVYRLCFGLAMFYLLSLLMIKVKSSSDPRAAVHNGFWFFKFAAAIAIIIGA FFIPEGTFTTVWFYVGMAGAFCFILIQLVLLIDFAHSWNESWVEKMEEGNSRCWYAALLSATALNYLLSL VAIVLFFVYYTHPASCENKAFISVNMLLCVGASVMSILPKIQESQPRSGLLQSSVITVYTMYLTSWAMT NEPETNCNPSSLIIIGYNTTSTVPKEGQSVQWWHAQGIIIGLILFLLCVFYSSIRTSNNSQVNKLTLSDE STLIEDGGARSDGSLEDGDDVHRAVDNERDGVTSYSFFHFMLFLASLYIMMMLTNWYRYEPSREMKSQW TAVVWKISSSWIGIVLVWTLVAPLVLTRDFD</p> <p><b>TRTRPLEQKLISEEDLAANDILDYKDDDDKV</b></p>
Tag:	C-Myc/DDK
Predicted MW:	50.3 kDa
Concentration:	>0.05 µg/µL as determined by microplate BCA method
Purity:	> 80% as determined by SDS-PAGE and Coomassie blue staining
Buffer:	25 mM Tris-HCl, 100 mM glycine, pH 7.3, 10% glycerol
Preparation:	Recombinant protein was captured through anti-DDK affinity column followed by conventional chromatography steps.
Note:	For testing in cell culture applications, please filter before use. Note that you may experience some loss of protein during the filtration process.
Storage:	Store at -80°C.
Stability:	Stable for 12 months from the date of receipt of the product under proper storage and handling conditions. Avoid repeated freeze-thaw cycles.
RefSeq:	<u><a href="#">NP_065806</a></u>



[View online »](#)

Locus ID:	57515
UniProt ID:	<a href="#">Q9NRX5</a>
RefSeq Size:	3144
Cytogenetics:	6q22.31
RefSeq ORF:	1359
Synonyms:	TDE1L; TDE2; TMS-2; TMS2
Summary:	Enhances the incorporation of serine into phosphatidylserine and sphingolipids. [UniProtKB/Swiss-Prot Function]
Protein Families:	Transmembrane

### Product images:



Coomassie blue staining of purified SERINC1 protein (Cat# [TP306001]). The protein was produced from HEK293T cells transfected with SERINC1 cDNA clone (Cat# [RC206001]) using MegaTran 2.0 (Cat# [TT210002]).