

Product datasheet for TP305992L

KTEL1 (POGLUT1) (NM_152305) Human Recombinant Protein

Product data:

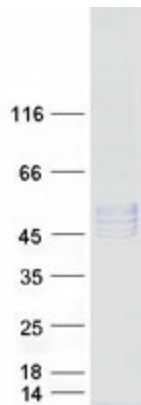
Product Type:	Recombinant Proteins
Description:	Recombinant protein of human KTEL (Lys-Tyr-Glu-Leu) containing 1 (KTELC1), transcript variant 1, 1 mg
Species:	Human
Expression Host:	HEK293T
Expression cDNA Clone or AA Sequence:	>RC205992 protein sequence Red =Cloning site Green =Tags(s)
	MEWWASSPLRLWLLLFLLPSAQGRQKESGSKWKVFIDQINRSLENYEPCSSQNCSCYHGVIEEDLTPFRG GISRRMMAEVRRKLGTHYQITKNRLYREND CMFPSRCGVEHFILEVIGRLPDMEMVINVRDYPQVPKW MEPAIPVFSFKTSEYHDIMYPAWTFWEGGPAWPIYPTGLGRWDLFREDLVRSAQWPWKKNSTAYFR GSRTSPERDPLILLSRKNTKLVDAEYTKNQAWKSMKDTLGKPAKDVHLVDHCKYKYLNFNRGVAASFRF KHLFLCGSLVFHVGDEWLEFFYPQLKPWWHYIPVKTDLSNVQELLQFVKANDDVAQEIAERGSQFIRNHL QMDDITCYWENLLSEYSKFLSYNVTRRKG YDQIIPKMLKTEL
	TRTRPLEQKLISEEDLAANDILDYKDDDDKV
Tag:	C-Myc/DDK
Predicted MW:	46 kDa
Concentration:	>0.05 µg/µL as determined by microplate BCA method
Purity:	> 80% as determined by SDS-PAGE and Coomassie blue staining
Buffer:	25 mM Tris-HCl, 100 mM glycine, pH 7.3, 10% glycerol
Preparation:	Recombinant protein was captured through anti-DDK affinity column followed by conventional chromatography steps.
Note:	For testing in cell culture applications, please filter before use. Note that you may experience some loss of protein during the filtration process.
Storage:	Store at -80°C.
Stability:	Stable for 12 months from the date of receipt of the product under proper storage and handling conditions. Avoid repeated freeze-thaw cycles.
RefSeq:	<u>NP_689518</u>



[View online »](#)

Locus ID:	56983
UniProt ID:	Q8NBL1
RefSeq Size:	3552
Cytogenetics:	3q13.33
RefSeq ORF:	1176
Synonyms:	C3orf9; CLP46; hCLP46; KDELCL1; KTELC1; LGMD2Z; LGMDR21; MDS010; MDSRP; Rumi
Summary:	This gene encodes a protein with both O-glucosyltransferase and O-xylosyltransferase activity which localizes to the lumen of the endoplasmic reticulum. This protein has a carboxy-terminal KTEL motif which is predicted to function as an endoplasmic reticulum retention signal. This gene is an essential regulator of Notch signalling and likely plays a role in cell fate and tissue formation during development. It may also play a role in the pathogenesis of leukemia. Mutations in this gene have been associated with the autosomal dominant genodermatosis Dowling-Degos disease 4. Alternative splicing results in multiple transcript variants. [provided by RefSeq, Apr 2014]

Product images:



Coomassie blue staining of purified POGLUT1 protein (Cat# [TP305992]). The protein was produced from HEK293T cells transfected with POGLUT1 cDNA clone (Cat# [RC205992]) using MegaTran 2.0 (Cat# [TT210002]).