

Product datasheet for **TP305983L**

NSF (NM_006178) Human Recombinant Protein

Product data:

Product Type:	Recombinant Proteins
Description:	Recombinant protein of human N-ethylmaleimide-sensitive factor (NSF), 1 mg
Species:	Human
Expression Host:	HEK293T
Expression cDNA Clone or AA Sequence:	>RC205983 protein sequence Red =Cloning site Green =Tags(s)

MAGRSMQAARCPTDELSLTNCAVNEKDFQSGQHVVIVRTSPNHRYTFTLKTHTPSVVPGSIAFSLPQRKWA
GLSIGQEIEVSLYTFDKAKQCIGTMTIEIDFLQKKSIDSNPYDTDKMAAEFIQQFNNQAFSVGQQLVFSF
NEKLFGLLVKDIEAMDPSILKGEPATGKRQKIEVGLVVGNSQVAFKAENSSLNLIGKAKTKENRQSIIN
PDWNFEKMGIGGLDKEFSDIFRRAFASRVFPPEIVEQMGCKHVKGILLYGPPGCGKTLLARQIGKMLNAR
EPKVVNGPEILNKYVGESEANIRKLFADAEQRRLLGANSGLHIIIFDEIDAICKQRGSMAGSTGVHDTV
VNQLLSKIDGVEQLNINLVIGMTNRPDLIDEALLRPGRLEVKMEIGLPDEKGRQLIHIHTARMRGHQLL
SADVDIKELAVETKNFSGAELEGLVRAAQSTAMNRHIKASTKVEVDMEKAESLQVTRGDFLASLENDIKP
AFGTNQEDYASYIMNGIWKWGPVTRVLDDGELLVQQTKNSDRTPLVSVLLEGGPPHSGKTALAAKIAEES
NFPFIKICSPDKMIGFSETAKCQAMKKIFDDAYKSQLSCVWVDDIERLLDYVPIGPRFSNLVLQALLVLL
KKAPPQGRKLLIIGTTSRKDVLQEMEMLNAFSTTIHVPNIATGEQLLEALELLGNFKDKERTTIAQQVKG
KKVWIGIKLLMLIEMSLQMDPEYRVRKFLALLREEGASPLDFD

TRTRPLEQKLISEEDLAANDILDYKDDDDKV

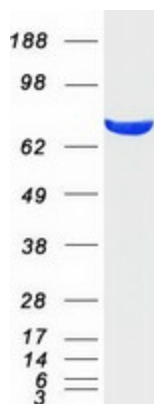
Tag:	C-Myc/DDK
Predicted MW:	82.4 kDa
Concentration:	>0.05 µg/µL as determined by microplate BCA method
Purity:	> 80% as determined by SDS-PAGE and Coomassie blue staining
Buffer:	25 mM Tris-HCl, 100 mM glycine, pH 7.3, 10% glycerol
Preparation:	Recombinant protein was captured through anti-DDK affinity column followed by conventional chromatography steps.
Note:	For testing in cell culture applications, please filter before use. Note that you may experience some loss of protein during the filtration process.
Storage:	Store at -80°C.



[View online »](#)

Stability:	Stable for 12 months from the date of receipt of the product under proper storage and handling conditions. Avoid repeated freeze-thaw cycles.
RefSeq:	<u>NP_006169</u>
Locus ID:	4905
UniProt ID:	<u>P46459, A0A384MTI6</u>
RefSeq Size:	3995
Cytogenetics:	17q21.31
RefSeq ORF:	2232
Synonyms:	SEC18; SKD2
Summary:	Required for vesicle-mediated transport. Catalyzes the fusion of transport vesicles within the Golgi cisternae. Is also required for transport from the endoplasmic reticulum to the Golgi stack. Seems to function as a fusion protein required for the delivery of cargo proteins to all compartments of the Golgi stack independent of vesicle origin. Interaction with AMPAR subunit GRIA2 leads to influence GRIA2 membrane cycling (By similarity).[UniProtKB/Swiss-Prot Function]
Protein Families:	Protease

Product images:



Coomassie blue staining of purified NSF protein (Cat# [TP305983]). The protein was produced from HEK293T cells transfected with NSF cDNA clone (Cat# [RC205983]) using MegaTran 2.0 (Cat# [TT210002]).