

Product datasheet for **TP305977**

MOBKL2B (MOB3B) (NM_024761) Human Recombinant Protein

Product data:

Product Type:	Recombinant Proteins
Description:	Recombinant protein of human MOB1, Mps One Binder kinase activator-like 2B (yeast) (MOBKL2B), 20 µg
Species:	Human
Expression Host:	HEK293T
Expression cDNA Clone or AA Sequence:	>RC205977 protein sequence Red =Cloning site Green =Tags(s)
	<p>MSIALKQVFNPKDKTFRPKRKFEFGTQRFELHKRAQASLNSGVDLKAQVQLPSGEDQNDWVAVHVDFNRI INLIYGTICEFCTERTCPVMSGGPKYEYRWQDDLKYKKPTALPAPQYMNLLMDWIEVQINNEEIFPTCVG VFPKFNFLQICMKILCRLFRVHVYIHHFDRVIVMGAEAHVNTCYKHFYFVTEMNLIDRKELEPLKEM TSRMCH</p> <p>TRTRPLEQKLISEEDLAANDILDYKDDDDKV</p>
Tag:	C-Myc/DDK
Predicted MW:	25.3 kDa
Concentration:	>0.05 µg/µL as determined by microplate BCA method
Purity:	> 80% as determined by SDS-PAGE and Coomassie blue staining
Buffer:	25 mM Tris-HCl, 100 mM glycine, pH 7.3, 10% glycerol
Preparation:	Recombinant protein was captured through anti-DDK affinity column followed by conventional chromatography steps.
Note:	For testing in cell culture applications, please filter before use. Note that you may experience some loss of protein during the filtration process.
Storage:	Store at -80°C.
Stability:	Stable for 12 months from the date of receipt of the product under proper storage and handling conditions. Avoid repeated freeze-thaw cycles.
RefSeq:	<u>NP_079037</u>
Locus ID:	79817



[View online »](#)

UniProt ID: [Q86TA1](#)

RefSeq Size: 6528

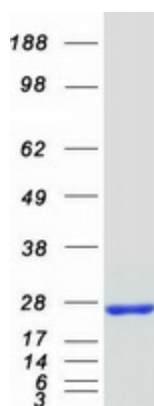
Cytogenetics: 9p21.2

RefSeq ORF: 648

Synonyms: C9orf35; MOB1D; MOBKL2B

Summary: The protein encoded by this gene shares similarity with the yeast Mob1 protein. Yeast Mob1 binds Mps1p, a protein kinase essential for spindle pole body duplication and mitotic checkpoint regulation. This gene is located on the opposite strand as the interferon kappa precursor (IFNK) gene. [provided by RefSeq, Jul 2008]

Product images:



Coomassie blue staining of purified MOB3B protein (Cat# TP305977). The protein was produced from HEK293T cells transfected with MOB3B cDNA clone (Cat# [RC205977]) using MegaTran 2.0 (Cat# [TT210002]).