

Product datasheet for TP305974L

Nudel (NDEL1) (NM_030808) Human Recombinant Protein

Product data:

Product Type:	Recombinant Proteins
Description:	Recombinant protein of human nudE nuclear distribution gene E homolog (A. nidulans)-like 1 (NDEL1), transcript variant 2, 1 mg
Species:	Human
Expression Host:	HEK293T
Expression cDNA Clone or AA Sequence:	>RC205974 protein sequence Red=Cloning site Green=Tags(s)

MDGEDIPDFSSLKEETAYWKELSLKYKQSFQEARDELVEFQEGSRELEAELEAQLVQAEQRNRDLQADNQ
RLKYEVEALKEKLEHQYAQSYKQVSVLEDDLSQTRAIKEQLHKYVRELEQANDDLERAKRATIVSLED
FEQRLNQAIERNAFLESELDEKESLLVSVQRLKDEARDLRQELAVRERQQEVTRKSAPSSPTLDCEKMDSAV
QASLSLPATPVGKGTENTFPSPKAIPNGFGTSPLTPSARISALNIVGDLLRKVGALESKLAACRNFAKDQ
ASRKSYSIGNVNCGVLNNGNGTKFSRSGHTSFFDKGAVNGFDTAPPPPGLGSSRPSSAPGMLPLSV

TRTRPLEQKLISEEDLAANDILDYKDDDDKV

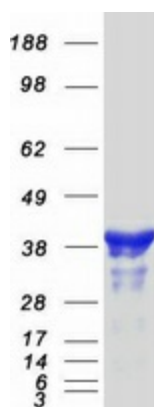
Tag:	C-Myc/DDK
Predicted MW:	38.2 kDa
Concentration:	>0.05 µg/µL as determined by microplate BCA method
Purity:	> 80% as determined by SDS-PAGE and Coomassie blue staining
Buffer:	25 mM Tris-HCl, 100 mM glycine, pH 7.3, 10% glycerol
Preparation:	Recombinant protein was captured through anti-DDK affinity column followed by conventional chromatography steps.
Note:	For testing in cell culture applications, please filter before use. Note that you may experience some loss of protein during the filtration process.
Storage:	Store at -80°C.
Stability:	Stable for 12 months from the date of receipt of the product under proper storage and handling conditions. Avoid repeated freeze-thaw cycles.
RefSeq:	NP_110435
Locus ID:	81565



[View online »](#)

UniProt ID:	Q9GZM8
RefSeq Size:	2407
Cytogenetics:	17p13.1
RefSeq ORF:	1035
Synonyms:	EOPA; MITAP1; NDE1L1; NDE2; NUDEL
Summary:	This gene encodes a coiled-coil protein that plays a role in multiple processes including cytoskeletal organization, cell signaling and neuron migration, outgrowth and maintenance. Alternatively spliced transcript variants encoding multiple isoforms have been observed for this gene, and a pseudogene of this gene is located on the long arm of chromosome X. [provided by RefSeq, Mar 2012]

Product images:



Coomassie blue staining of purified NDEL1 protein (Cat# [TP305974]). The protein was produced from HEK293T cells transfected with NDEL1 cDNA clone (Cat# [RC205974]) using MegaTran 2.0 (Cat# [TT210002]).