

Product datasheet for TP305974

Nudel (NDEL1) (NM_030808) Human Recombinant Protein

Product data:

| | |
|---------------------------------------|---|
| Product Type: | Recombinant Proteins |
| Description: | Recombinant protein of human nudE nuclear distribution gene E homolog (A. nidulans)-like 1 (NDEL1), transcript variant 2, 20 µg |
| Species: | Human |
| Expression Host: | HEK293T |
| Expression cDNA Clone or AA Sequence: | >RC205974 protein sequence Red=Cloning site Green=Tags(s) |

MDGEDIPDFSSLKEETAYWKELSLKYKQSFQEARDELVEFQEGSRELEAELEAQLVQAEQRNRDLQADNQ
RLKYEVEALKEKLEHQYAQSYKQVSVLEDDLSQTRAIKEQLHKYVRELEQANDDLERAKRATIVSLED
FEQRLNQAIERNAFLESELDEKESLLVSVQRLKDEARDLRQELAVRERQQEVTRKSAPSSPTLDCEKMDSAV
QASLSLPATPVGKGTENTFPSPKAIPNGFGTSPLTPSARISALNIVGDLLRKVGALESKLAACRNFAKDQ
ASRKSYSIGNVNCGVLNNGNGTKFSRSGHTSFFDKGAVNGFDTAPPPPGLGSSRPSSAPGMLPLSV

TRTRPLEQKLISEEDLAANDILDYKDDDDKV

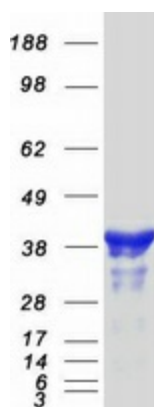
| | |
|----------------|--|
| Tag: | C-Myc/DDK |
| Predicted MW: | 38.2 kDa |
| Concentration: | >0.05 µg/µL as determined by microplate BCA method |
| Purity: | > 80% as determined by SDS-PAGE and Coomassie blue staining |
| Buffer: | 25 mM Tris-HCl, 100 mM glycine, pH 7.3, 10% glycerol |
| Preparation: | Recombinant protein was captured through anti-DDK affinity column followed by conventional chromatography steps. |
| Note: | For testing in cell culture applications, please filter before use. Note that you may experience some loss of protein during the filtration process. |
| Storage: | Store at -80°C. |
| Stability: | Stable for 12 months from the date of receipt of the product under proper storage and handling conditions. Avoid repeated freeze-thaw cycles. |
| RefSeq: | NP_110435 |
| Locus ID: | 81565 |



[View online »](#)

| | |
|---------------|--|
| UniProt ID: | Q9GZM8 |
| RefSeq Size: | 2407 |
| Cytogenetics: | 17p13.1 |
| RefSeq ORF: | 1035 |
| Synonyms: | EOPA; MITAP1; NDE1L1; NDE2; NUDEL |
| Summary: | This gene encodes a coiled-coil protein that plays a role in multiple processes including cytoskeletal organization, cell signaling and neuron migration, outgrowth and maintenance. Alternatively spliced transcript variants encoding multiple isoforms have been observed for this gene, and a pseudogene of this gene is located on the long arm of chromosome X. [provided by RefSeq, Mar 2012] |

Product images:



Coomassie blue staining of purified NDEL1 protein (Cat# TP305974). The protein was produced from HEK293T cells transfected with NDEL1 cDNA clone (Cat# [RC205974]) using MegaTran 2.0 (Cat# [TT210002]).