

## Product datasheet for **TP305966**

### ARL6 (NM\_032146) Human Recombinant Protein

#### Product data:

Product Type:	Recombinant Proteins
Description:	Recombinant protein of human ADP-ribosylation factor-like 6 (ARL6), transcript variant 1, 20 µg
Species:	Human
Expression Host:	HEK293T
Expression cDNA Clone or AA Sequence:	>RC205966 protein sequence Red=Cloning site Green=Tags(s)

MGLLDRLSVLLGLKKKEVHVLCLGLDNSGKTTIINKLKPSNAQSQNILPTIGFSIEKFKSSLSFTVFDM  
SGQGRYRNLWEHYKQAIIFVIDSSDRLRMVVAKEELDTLLNHPDIKHRRIPILFFANKMDLRDAVTS  
VKVSQLLCLENIKDKPWHICASDAIKGEGVLDLQDQIQTVKT

TRTRPLEQKLISEEDLAANDILDYKDDDDKV

Tag:	C-Myc/DDK
Predicted MW:	20.9 kDa
Concentration:	>0.05 µg/µL as determined by microplate BCA method
Purity:	> 80% as determined by SDS-PAGE and Coomassie blue staining
Buffer:	25 mM Tris-HCl, 100 mM glycine, pH 7.3, 10% glycerol
Preparation:	Recombinant protein was captured through anti-DDK affinity column followed by conventional chromatography steps.
Note:	For testing in cell culture applications, please filter before use. Note that you may experience some loss of protein during the filtration process.
Storage:	Store at -80°C.
Stability:	Stable for 12 months from the date of receipt of the product under proper storage and handling conditions. Avoid repeated freeze-thaw cycles.
RefSeq:	<a href="#">NP_115522</a>
Locus ID:	84100
UniProt ID:	<a href="#">Q9H0F7</a>



[View online »](#)

RefSeq Size: 1630

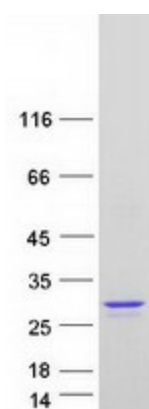
Cytogenetics: 3q11.2

RefSeq ORF: 558

Synonyms: BBS3; RP55

**Summary:** The protein encoded by this gene belongs to the ARF-like (ADP ribosylation factor-like) sub-family of the ARF family of GTP-binding proteins which are involved in regulation of intracellular traffic. Mutations in this gene are associated with Bardet-Biedl syndrome (BBS). A vision-specific transcript, encoding long isoform BBS3L, has been described (PMID: 20333246). [provided by RefSeq, Apr 2016]

### Product images:



Coomassie blue staining of purified ARL6 protein (Cat# TP305966). The protein was produced from HEK293T cells transfected with ARL6 cDNA clone (Cat# [RC205966]) using MegaTran 2.0 (Cat# [TT210002]).