

## Product datasheet for **TP305953**

### CRYZL1 (NM\_145858) Human Recombinant Protein

#### Product data:

Product Type:	Recombinant Proteins
Description:	Recombinant protein of human crystallin, zeta (quinone reductase)-like 1 (CRYZL1), 20 µg
Species:	Human
Expression Host:	HEK293T
Expression cDNA Clone or AA Sequence:	>RC205953 protein sequence <b>Red</b> =Cloning site <b>Green</b> =Tags(s)
	<p>MKGLYFQQSSTDEEITVFVFEKEDLPVTEDNFVKLQVKACALSQINTKLLAEMKMKKDLFPVGREIAGIV LDVGSKVSFFQPDDEVGILPLDSEDPGLCEVVRVHEHYLVHKPEKVTWTEAAGSIRDGVRAYTALHYLS HLSPGKSVLIMDGASAFGTIAIQLAHHRGAKVISTACSLQCLERFRPPIARVIDVSNQKVHVAESCL EETGGLGVDIVLDAGVRLYSKDDPAVKLQLLPHKHDIITLLGVGGHWVTTEENLQLDPPDSHCLFLKGA TLAFLNDEWNLNSVQQGKYLKILKDVMEKLSTGVFRPQLDEPIPLYEAKVSMEAVQKNQGRKKQVVQF</p> <p><b>TRTRPLEQKLISEEDLAANDILDYKDDDDKV</b></p>
Tag:	C-Myc/DDK
Predicted MW:	38.5 kDa
Concentration:	>0.05 µg/µL as determined by microplate BCA method
Purity:	> 80% as determined by SDS-PAGE and Coomassie blue staining
Buffer:	25 mM Tris-HCl, 100 mM glycine, pH 7.3, 10% glycerol
Preparation:	Recombinant protein was captured through anti-DDK affinity column followed by conventional chromatography steps.
Note:	For testing in cell culture applications, please filter before use. Note that you may experience some loss of protein during the filtration process.
Storage:	Store at -80°C.
Stability:	Stable for 12 months from the date of receipt of the product under proper storage and handling conditions. Avoid repeated freeze-thaw cycles.
RefSeq:	<u><a href="#">NP_665857</a></u>
Locus ID:	9946



[View online »](#)

UniProt ID: [O95825](#)

RefSeq Size: 1726

Cytogenetics: 21q22.11

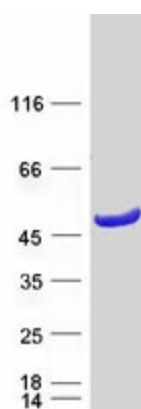
RefSeq ORF: 1047

Synonyms: 4P11; QOH-1

**Summary:** This gene encodes a protein that has sequence similarity to zeta crystallin, also known as quinone oxidoreductase. This zeta crystallin-like protein also contains an NAD(P)H binding site. Alternatively spliced transcript variants have been observed but their full-length nature has not been completely determined. [provided by RefSeq, Jul 2008]

**Protein Families:** Druggable Genome

### Product images:



Coomassie blue staining of purified CRYZL1 protein (Cat# TP305953). The protein was produced from HEK293T cells transfected with CRYZL1 cDNA clone (Cat# [RC205953]) using MegaTran 2.0 (Cat# [TT210002]).