

Product datasheet for **TP305943L**

Albumin (ALB) (NM_000477) Human Recombinant Protein

Product data:

Product Type:	Recombinant Proteins
Description:	Recombinant protein of human albumin (ALB), 1 mg
Species:	Human
Expression Host:	HEK293T
Expression cDNA Clone or AA Sequence:	>RC205943 representing NM_000477 Red=Cloning site Green=Tags(s)

MKWTFISLLFLFSSAYSRGVFRRDAAHKSEVAHRFKDLGEENFKALVLIAFAQYLQQCPFEDHVKLVNEV
TEFAKTCVADESAENCDKSLHTLFGDKLCTVATLRETYGEMADCCAKQEPERNECFLOHKDDNPPLPRLV
RPEVDVMCTAFHDNEETFLKKYLYEIARRHPYFYAPELLFFAKRYKAAFTTECCQAADKAAACLLPKLDEL
DEGKASSAKQRLKCASLQKGFGERAFKAWAVARLSQRFKAEFAEVSKLVTDLTQVHTECCHGDLLECADD
RADLAKYICENQDSISSKLEKCEKPLLEKSHCIAEVENDEMPADLPSLAADFVESKDVCKNYAEAKDVF
LGMFLYEYARRHPDYSVLLLLRLAKTYETTLEKCCAAADPHECYAKVFDEFKPLVEEPQNLKQNCLEFE
QLGEYKFQNALLVRYTKKVPQVSTPTLVEVSRNLGKVGSKCKKHPEAKRMPCAEDYLSVVLNQLCVLHEK
TPVSDRVTKCCTESLVNRRPCFSALEVDETYVPKEFNAETFTFHADICTLSEKERQIKKQATALVELVKHK
PKATKEQLKAVMDDFAAFVEKCKKADDKETCFEEGKKLVAASQAALGL

TRTRPLEQKLISEEDLAANDILDYKDDDDKV

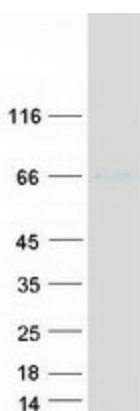
Tag:	C-Myc/DDK
Predicted MW:	67.2 kDa
Concentration:	>0.05 µg/µL as determined by microplate BCA method
Purity:	> 80% as determined by SDS-PAGE and Coomassie blue staining
Buffer:	25 mM Tris-HCl, 100 mM glycine, pH 7.3, 10% glycerol
Preparation:	Recombinant protein was captured through anti-DDK affinity column followed by conventional chromatography steps.
Note:	For testing in cell culture applications, please filter before use. Note that you may experience some loss of protein during the filtration process.
Storage:	Store at -80°C.



[View online »](#)

Stability:	Stable for 12 months from the date of receipt of the product under proper storage and handling conditions. Avoid repeated freeze-thaw cycles.
RefSeq:	NP_000468
Locus ID:	213
UniProt ID:	P02768
RefSeq Size:	2215
Cytogenetics:	4q13.3
RefSeq ORF:	1827
Synonyms:	FDAHT; HSA; PRO0883; PRO0903; PRO1341
Summary:	This gene encodes the most abundant protein in human blood. This protein functions in the regulation of blood plasma colloid osmotic pressure and acts as a carrier protein for a wide range of endogenous molecules including hormones, fatty acids, and metabolites, as well as exogenous drugs. Additionally, this protein exhibits an esterase-like activity with broad substrate specificity. The encoded preproprotein is proteolytically processed to generate the mature protein. A peptide derived from this protein, EPI-X4, is an endogenous inhibitor of the CXCR4 chemokine receptor. [provided by RefSeq, Jul 2016]
Protein Families:	Secreted Protein

Product images:



Coomassie blue staining of purified ALB protein (Cat# [TP305943]). The protein was produced from HEK293T cells transfected with ALB cDNA clone (Cat# [RC205943]) using MegaTran 2.0 (Cat# [TT210002]).