

Product datasheet for TP305933

SMYD3 (NM_022743) Human Recombinant Protein

Product data:

Product Type:	Recombinant Proteins
Description:	Recombinant protein of human SET and MYND domain containing 3 (SMYD3), 20 µg
Species:	Human
Expression Host:	HEK293T
Expression cDNA Clone or AA Sequence:	>RC205933 protein sequence Red =Cloning site Green =Tags(s)
	MEPLKVEKFATANRGNGLRAVTPLRPGELLFRSDPLAYTVCKGSRGWCDRCLLGKEKLMRCSQCRVAKY CSAKCQKKAHPDCHKRECKCLKSCKPRYPDSVRLLRVVFKLMDGAPSESEKLYSFYDLESNINKLTEDR KEGLRQLVMTFQHFMRREEIQDASQLPPAFDLFEAFKVICNSFTICNAEMQEVGVLPSISLLNHSCDP NCSIVFNPHLLLRAVRDIEVGEELTICYLDMLMTSEERRKQLRDQYCFECCDFRCQTQDKDADMLTGD QVWKEVQESLKKIEELKAHWKWEQVLAMCQAISSNSERLPDINIYQLKVLDCAMDACINLGLLEALFY GTRTMEPYRIFFPGSHPVGRVQVMKVGKQLHQGMFPQAMKNLRLAFDIMRVTHGREHSLIEDLILLLEE CDANIRAS
	TRTRPLEQKLISEEDLAANDILDYKDDDDKV
Tag:	C-Myc/DDK
Predicted MW:	42.4 kDa
Concentration:	>0.05 µg/µL as determined by microplate BCA method
Purity:	> 80% as determined by SDS-PAGE and Coomassie blue staining
Buffer:	25 mM Tris-HCl, 100 mM glycine, pH 7.3, 10% glycerol
Preparation:	Recombinant protein was captured through anti-DDK affinity column followed by conventional chromatography steps.
Note:	For testing in cell culture applications, please filter before use. Note that you may experience some loss of protein during the filtration process.
Storage:	Store at -80°C.
Stability:	Stable for 12 months from the date of receipt of the product under proper storage and handling conditions. Avoid repeated freeze-thaw cycles.
RefSeq:	<u>NP_073580</u>

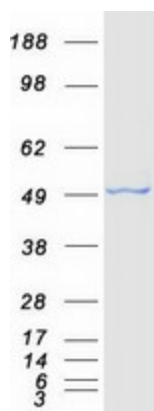


[View online »](#)

Locus ID: 64754
UniProt ID: [Q9H7B4](#)
RefSeq Size: 1469
Cytogenetics: 1q44
RefSeq ORF: 1284
Synonyms: bA74P14.1; KMT3E; ZMYND1; ZNFN3A1

Summary: This gene encodes a histone methyltransferase which functions in RNA polymerase II complexes by an interaction with a specific RNA helicase. Multiple transcript variants encoding different isoforms have been found for this gene. [provided by RefSeq, Dec 2011]

Product images:



Coomassie blue staining of purified SMYD3 protein (Cat# TP305933). The protein was produced from HEK293T cells transfected with SMYD3 cDNA clone (Cat# [RC205933]) using MegaTran 2.0 (Cat# [TT210002]).