

Product datasheet for **TP305932M**

Myosin Light Chain 2 (MYL2) (NM_000432) Human Recombinant Protein

Product data:

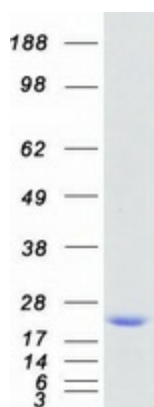
Product Type:	Recombinant Proteins
Description:	Recombinant protein of human myosin, light chain 2, regulatory, cardiac, slow (MYL2), 100 µg
Species:	Human
Expression Host:	HEK293T
Expression cDNA Clone or AA Sequence:	>RC205932 protein sequence Red =Cloning site Green =Tags(s)
	MAPKKAKKRAGGANSNVFSMFQEQTIQEFKEAFTIMDQNRDGFIDKNDLRDTFAALGRVNVKNEEIDEMI KEAPGPINFTVFLTMFGEKLGADPEETILNAFKVFDPEGKGVLKADYVREMLTTQAERFSKEEVDQMFA AFPPDVTGNLDYKNLVHIITHGEEKD
	TRTRPLEQKLISEEDLAANDILDYKDDDDKV
Tag:	C-Myc/DDK
Predicted MW:	18.6 kDa
Concentration:	>0.05 µg/µL as determined by microplate BCA method
Purity:	> 80% as determined by SDS-PAGE and Coomassie blue staining
Buffer:	25 mM Tris-HCl, 100 mM glycine, pH 7.3, 10% glycerol
Preparation:	Recombinant protein was captured through anti-DDK affinity column followed by conventional chromatography steps.
Note:	For testing in cell culture applications, please filter before use. Note that you may experience some loss of protein during the filtration process.
Storage:	Store at -80°C.
Stability:	Stable for 12 months from the date of receipt of the product under proper storage and handling conditions. Avoid repeated freeze-thaw cycles.
RefSeq:	NP_000423
Locus ID:	4633
UniProt ID:	P10916 , Q6IB42
RefSeq Size:	855



[View online »](#)

Cytogenetics:	12q24.11
RefSeq ORF:	498
Synonyms:	CMH10; MLC-2s/v; MLC2
Summary:	This gene encodes the regulatory light chain associated with cardiac myosin beta (or slow) heavy chain. Ca ⁺ triggers the phosphorylation of regulatory light chain that in turn triggers contraction. Mutations in this gene are associated with mid-left ventricular chamber type hypertrophic cardiomyopathy. [provided by RefSeq, Jul 2008]
Protein Pathways:	Cardiac muscle contraction, Dilated cardiomyopathy, Focal adhesion, Hypertrophic cardiomyopathy (HCM), Leukocyte transendothelial migration, Regulation of actin cytoskeleton, Tight junction

Product images:



Coomassie blue staining of purified MYL2 protein (Cat# [TP305932]). The protein was produced from HEK293T cells transfected with MYL2 cDNA clone (Cat# [RC205932]) using MegaTran 2.0 (Cat# [TT210002]).