

## Product datasheet for **TP305928SE**

### hCG beta (CGB5) (NM\_033043) Human Recombinant Protein

#### Product data:

Product Type:	Recombinant Proteins
Description:	Purified recombinant protein of Homo sapiens chorionic gonadotropin, beta polypeptide 5 (CGB5), secretory expressed in HEK293T cells, 20ug
Species:	Human
Expression Host:	HEK293T
Expression cDNA Clone or AA Sequence:	>RC205928 protein sequence <b>Red</b> =Cloning site <b>Green</b> =Tags(s)  MEMFQGLLLLLLLSMGGT WASKEPLRPRCRPINATLAVEKEGCPVCITVNTTICAGYCPTMTRVLQGVLP ALPQVVCNYRDVRFESIRLPGCPRGVNPVWSYAVALSCQCALCRRSTTDCGGPKDHPLTCD DDPREFQDSSS SKAPPPSLPSPSRLPGSDTPILPQ  <b>TRTRPLEQKLISEEDLAANDILDYKDDDDKV</b>
Tag:	C-Myc/DDK
Predicted MW:	19.1 kDa
Concentration:	>50 ug/mL as determined by microplate Bradford method
Purity:	> 80% as determined by SDS-PAGE and Coomassie blue staining
Buffer:	25mM Tris-HCl, pH7.3, 100mM glycine, 10% glycerol
Note:	For culture applications, please filter before use. Note that you may experience some loss of protein during the filtration process.
Storage:	Store at -80°C after receiving vials.
Stability:	Stable for at least 1 year from receipt of products under proper storage and handling conditions. Avoid repeated freeze-thaw cycles.
RefSeq:	<a href="#">NP_149032</a>
Locus ID:	93659
UniProt ID:	<a href="#">P01233</a> , <a href="#">P0DN86</a> , <a href="#">A0A0F7RQP8</a>
RefSeq Size:	880
Cytogenetics:	19q13.33



[View online »](#)

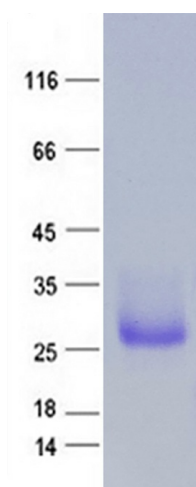
RefSeq ORF: 495

Synonyms: CGB; HCG; hCGB

**Summary:** This gene is a member of the glycoprotein hormone beta chain family and encodes the beta 5 subunit of chorionic gonadotropin (CG). Glycoprotein hormones are heterodimers consisting of a common alpha subunit and an unique beta subunit which confers biological specificity. CG is produced by the trophoblastic cells of the placenta and stimulates the ovaries to synthesize the steroids that are essential for the maintenance of pregnancy. The beta subunit of CG is encoded by 6 genes which are arranged in tandem and inverted pairs on chromosome 19q13.3 and contiguous with the luteinizing hormone beta subunit gene. [provided by RefSeq, Jul 2008]

**Protein Families:** Druggable Genome

### Product images:



Coomassie blue staining of purified CGB5 protein (Cat #TP305928SE). The protein was produced from mammalian cells transfected with CGB5 cDNA clone (Cat #[RC205928]).