

Product datasheet for **TP305928L**

hCG beta (CGB5) (NM_033043) Human Recombinant Protein

Product data:

Product Type:	Recombinant Proteins
Description:	Purified recombinant protein of Homo sapiens chorionic gonadotropin, beta polypeptide 5 (CGB5), 1 mg
Species:	Human
Expression Host:	HEK293T
Expression cDNA Clone or AA Sequence:	>RC205928 protein sequence Red =Cloning site Green =Tags(s)
	MEMFQGLLLLLLLSMGGT WASKEPLRPRCRPINATLAVEKEGCPVCITVNTTICAGYCPTMTRVLQGVLP ALPQVVCNYRDVRFESIRLPGCPRGVNPVWSYAVALSCQCALCRRSTTDCGGPKDHPLTCDDPRFQDSSS SKAPPPSLPSPSRLPGPSDTPILPQ
	TRTRPLEQKLISEEDLAANDILDYKDDDDKV
Tag:	C-Myc/DDK
Predicted MW:	15.5 kDa
Concentration:	>0.05 µg/µL as determined by microplate BCA method
Purity:	> 80% as determined by SDS-PAGE and Coomassie blue staining
Buffer:	25 mM Tris-HCl, 100 mM glycine, pH 7.3, 10% glycerol
Preparation:	Recombinant protein was captured through anti-DDK affinity column followed by conventional chromatography steps.
Note:	For testing in cell culture applications, please filter before use. Note that you may experience some loss of protein during the filtration process.
Storage:	Store at -80°C.
Stability:	Stable for 12 months from the date of receipt of the product under proper storage and handling conditions. Avoid repeated freeze-thaw cycles.
RefSeq:	NP_149032
Locus ID:	93659
UniProt ID:	P01233 , P0DN86 , A0A0F7RQP8



[View online »](#)

RefSeq Size: 880

Cytogenetics: 19q13.33

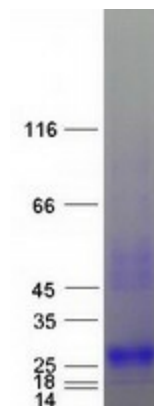
RefSeq ORF: 495

Synonyms: CGB; HCG; hCGB

Summary: This gene is a member of the glycoprotein hormone beta chain family and encodes the beta 5 subunit of chorionic gonadotropin (CG). Glycoprotein hormones are heterodimers consisting of a common alpha subunit and an unique beta subunit which confers biological specificity. CG is produced by the trophoblastic cells of the placenta and stimulates the ovaries to synthesize the steroids that are essential for the maintenance of pregnancy. The beta subunit of CG is encoded by 6 genes which are arranged in tandem and inverted pairs on chromosome 19q13.3 and contiguous with the luteinizing hormone beta subunit gene. [provided by RefSeq, Jul 2008]

Protein Families: Druggable Genome

Product images:



Coomassie blue staining of purified CGB5 protein (Cat# [TP305928]). The protein was produced from HEK293T cells transfected with CGB5 cDNA clone (Cat# [RC205928]) using MegaTran 2.0 (Cat# [TT210002]).