

## Product datasheet for **TP305922M**

### **MTP18 (MTFP1) (NM\_016498) Human Recombinant Protein**

#### **Product data:**

<b>Product Type:</b>	Recombinant Proteins
<b>Description:</b>	Purified recombinant protein of Homo sapiens mitochondrial protein 18 kDa (MTP18), nuclear gene encoding mitochondrial protein, transcript variant 1, 100 µg
<b>Species:</b>	Human
<b>Expression Host:</b>	HEK293T
<b>Expression cDNA Clone or AA Sequence:</b>	>RC205922 protein sequence <b>Red</b> =Cloning site <b>Green</b> =Tags(s)

MSEPQPRGAERDLYRDTWVRYLGYANEVGEAFRSLVPAAVWLSYGVASSYVLADAIDKGGKAGEVPSPE  
AGRSARVTVAVVDTFVWQALASVAIPGFTINRVCAASLYVLTATRWPLAVRKWTTTALGLLTIPIIIHP  
IDRSVDFLDSSLRKLKLYPTVGKPSSS

**TRTRPLEQKLISEEDLAANDILDYKDDDDKV**

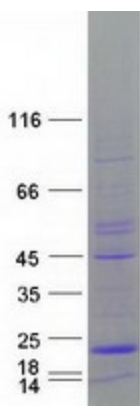
<b>Tag:</b>	C-Myc/DDK
<b>Predicted MW:</b>	17.8 kDa
<b>Concentration:</b>	>0.05 µg/µL as determined by microplate BCA method
<b>Purity:</b>	> 80% as determined by SDS-PAGE and Coomassie blue staining
<b>Buffer:</b>	25 mM Tris-HCl, 100 mM glycine, pH 7.3, 10% glycerol
<b>Preparation:</b>	Recombinant protein was captured through anti-DDK affinity column followed by conventional chromatography steps.
<b>Note:</b>	For testing in cell culture applications, please filter before use. Note that you may experience some loss of protein during the filtration process.
<b>Storage:</b>	Store at -80°C.
<b>Stability:</b>	Stable for 12 months from the date of receipt of the product under proper storage and handling conditions. Avoid repeated freeze-thaw cycles.
<b>RefSeq:</b>	<u><a href="#">NP_057582</a></u>
<b>Locus ID:</b>	51537
<b>UniProt ID:</b>	<u><a href="#">Q9UDX5</a></u> , <u><a href="#">A0A024R1E4</a></u>



[View online »](#)

RefSeq Size:	1298
Cytogenetics:	22q12.2
RefSeq ORF:	498
Synonyms:	HSPC242; MTP18
Summary:	MTP18 is a mitochondrial protein and downstream target of the phosphatidylinositol 3-kinase (see PIK3CA, MIM 171834) signaling pathway that plays a role in cell viability and mitochondrial dynamics (Tondera et al., 2004 [PubMed 15155745]).[supplied by OMIM, Mar 2008]

### Product images:



Coomassie blue staining of purified MTFP1 protein (Cat# [TP305922]). The protein was produced from HEK293T cells transfected with MTFP1 cDNA clone (Cat# [RC205922]) using MegaTran 2.0 (Cat# [TT210002]).