

Product datasheet for **TP305920M**

Neurofilament (NEFL) (NM_006158) Human Recombinant Protein

Product data:

Product Type:	Recombinant Proteins
Description:	Recombinant protein of human neurofilament, light polypeptide (NEFL), 100 µg
Species:	Human
Expression Host:	HEK293T
Expression cDNA Clone or AA Sequence:	>RC205920 protein sequence Red =Cloning site Green =Tags(s)

MSSFSYEPYYSTSYKRRYVETPRVHISSVRSGYSTARSAYSSYSAPVSSSLVRRSYSSSSGSLMPSLEN
LDLSQVAAISNDLKSIRTQEKAQLQDLNDRFASFIERVHELEQQNKVLEALLVLRQKHSEPSRFRALYE
QEIRDLRLAAEDATNEKQALQGEREGLEETLRNLQARYEEVLSREDAEGRLMEARKGADEAALARAELE
KRIDSLMDEISFLKKVHEEEIAELQAQIQYAQISVEMDVTKPDLSAALKDIRAQYEKLAAKNMQNAEEWF
KSRFTVLTESAAKNTDAVRAAKDEVSESRLLKAKTLEIEACRGMNEALEKQLQELEDKQNADISAMQDT
INKLENELRTTKSEMARYLKEYQDLLNVKMALDIEIAAYRKLLEGEETRLSFTSVGSITSGYSSQSSQVFG
RSAYGGLQTSSYLMSTRSFPYYTSHVQEEQIEVEETIEAAKAAEAKDEPPSEGEAEKEEKKDKEEAEKKEE
AAEEEEAAKEESEEAKEEEEGGEGEGEEETKEAEKKEKVEGAGEEQAAKKKD

TRTRPLEQKLISEEDLAANDILDYKDDDDKV

Tag:	C-Myc/DDK
Predicted MW:	61.3 kDa
Concentration:	>0.1 µg/µL as determined by microplate BCA method
Purity:	> 80% as determined by SDS-PAGE and Coomassie blue staining
Buffer:	25 mM Tris-HCl, 100 mM glycine, pH 7.3, 10% glycerol
Preparation:	Recombinant protein was captured through anti-DDK affinity column followed by conventional chromatography steps.
Note:	For testing in cell culture applications, please filter before use. Note that you may experience some loss of protein during the filtration process.
Storage:	Store at -80°C.
Stability:	Stable for 12 months from the date of receipt of the product under proper storage and handling conditions. Avoid repeated freeze-thaw cycles.



[View online >](#)

RefSeq: [NP_006149](#)

Locus ID: 4747

UniProt ID: [P07196](#)

RefSeq Size: 3854

Cytogenetics: 8p21.2

RefSeq ORF: 1629

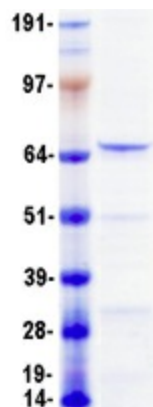
Synonyms: CMT1F; CMT2E; CMTDIG; NF-L; NF68; NFL; PPP1R110

Summary: Neurofilaments are type IV intermediate filament heteropolymers composed of light, medium, and heavy chains. Neurofilaments comprise the axoskeleton and they functionally maintain the neuronal caliber. They may also play a role in intracellular transport to axons and dendrites. This gene encodes the light chain neurofilament protein. Mutations in this gene cause Charcot-Marie-Tooth disease types 1F (CMT1F) and 2E (CMT2E), disorders of the peripheral nervous system that are characterized by distinct neuropathies. A pseudogene has been identified on chromosome Y. [provided by RefSeq, Oct 2008]

Protein Families: Druggable Genome, ES Cell Differentiation/IPS

Protein Pathways: Amyotrophic lateral sclerosis (ALS)

Product images:



Coomassie blue staining of purified NEFL protein (Cat# [TP305920]). The protein was produced from HEK293T cells transfected with NEFL cDNA clone (Cat# [RC205920]) using MegaTran 2.0 (Cat# [TT210002]).