

## Product datasheet for TP305917M

### PSMA3 (NM\_002788) Human Recombinant Protein

#### Product data:

Product Type:	Recombinant Proteins
Description:	Recombinant protein of human proteasome (prosome, macropain) subunit, alpha type, 3 (PSMA3), transcript variant 1, 100 µg
Species:	Human
Expression Host:	HEK293T
Expression cDNA Clone or AA Sequence:	>RC205917 protein sequence Red=Cloning site Green=Tags(s)

MSSIGTGYDLSASTFSPDGRVVFQVEYAMKAVENTSSTAIGIRCKDGVFGVEKLVLSKLYEEGSNKRLFNV  
DRHVGMAVAGLLADARSLADMAREEASNFRSNGYNIPLKHLADRVAMYVHAYTLYSAVRPFGCSEFMLGS  
YSVNDGAQLYMIDPSGVSYGYWGCAIGKARQAAKTEIEKLQMKEMTCRDIVKEVAKIIVHDEVKDKAF  
ELELSWVGELTNGRHEIVPKDIREEAKEYAKESLKEEDESDDDNM

SGPTRTRPLEQKLISEEDLAANDILDYKDDDDKV

Tag:	C-Myc/DDK
Predicted MW:	28.3 kDa
Concentration:	>0.05 µg/µL as determined by microplate BCA method
Purity:	> 80% as determined by SDS-PAGE and Coomassie blue staining
Buffer:	25 mM Tris-HCl, 100 mM glycine, pH 7.3, 10% glycerol
Preparation:	Recombinant protein was captured through anti-DDK affinity column followed by conventional chromatography steps.
Note:	For testing in cell culture applications, please filter before use. Note that you may experience some loss of protein during the filtration process.
Storage:	Store at -80°C.
Stability:	Stable for 12 months from the date of receipt of the product under proper storage and handling conditions. Avoid repeated freeze-thaw cycles.
RefSeq:	<u><a href="#">NP_002779</a></u>
Locus ID:	5684



[View online »](#)

UniProt ID: [P25788](#), [A0A140VK43](#)

RefSeq Size: 1014

Cytogenetics: 14q23.1

RefSeq ORF: 765

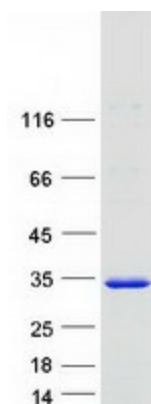
Synonyms: HC8; PSC3

**Summary:** The proteasome is a multicatalytic proteinase complex with a highly ordered ring-shaped 20S core structure. The core structure is composed of 4 rings of 28 non-identical subunits; 2 rings are composed of 7 alpha subunits and 2 rings are composed of 7 beta subunits. Proteasomes are distributed throughout eukaryotic cells at a high concentration and cleave peptides in an ATP/ubiquitin-dependent process in a non-lysosomal pathway. An essential function of a modified proteasome, the immunoproteasome, is the processing of class I MHC peptides. This gene encodes a member of the peptidase T1A family, that is a 20S core alpha subunit. Two alternative transcripts encoding different isoforms have been identified. [provided by RefSeq, Jul 2008]

**Protein Families:** Druggable Genome, Protease, Stem cell - Pluripotency

**Protein Pathways:** Proteasome

### Product images:



Coomassie blue staining of purified PSMA3 protein (Cat# [TP305917]). The protein was produced from HEK293T cells transfected with PSMA3 cDNA clone (Cat# [RC205917]) using MegaTran 2.0 (Cat# [TT210002]).