

Product datasheet for TP305914

DHX15 (NM_001358) Human Recombinant Protein

Product data:

Product Type:	Recombinant Proteins
Description:	Recombinant protein of human DEAH (Asp-Glu-Ala-His) box polypeptide 15 (DHX15), 20 µg
Species:	Human
Expression Host:	HEK293T
Expression cDNA Clone or AA Sequence:	>RC205914 protein sequence Red =Cloning site Green =Tags(s)

MSKRHRLDLGEDYPSGKKRAGTDGKDRDRDRDREDRSKDRDRERDRGDREREREKEKEKELRASTNAML
SAGLPPLKASHSAHSTHSAHSTHSTHSAHSTHAGHAGHTSLPQCINPFTNLPHTPRYYDILKKRLQLPVW
EYKDRFTDILVRHQSFVLVGETGSGKTTQIPQWCVEYMRSPLGPKRGVACTQPRRVAAMSVAQRVADEMD
VMLGQEVGYRIFEDCSSAKTILKYMTDGMMLREAMNDPLLERYGVILDEAHERLATDILMGVLKEVV
RQRSDLKIVMSATLDAGKFQIYFDNCPDLLTIPGRTHPVEIFYTPEPERDYLEAAIRTVIQIHMCEEEEG
DLLLFLTGQEEIDEACKRIKREVDDLGPVGDIIPLYSTLPPQQQRIFEPPPPKKQNGAIGRKYVVS
TNI AETSLTIDGVFVIDP GFAKQKVYNPRIRVESLLVTAISKASAQRAGRAGRTRPGKCFRLYTEKAY
KTEMQDNTYPEILRSNLGSVVLQLKKGIDDLVHFDFMDPPAPETLMRALELLNYLAALNDDGDLTELGS
MMAEFPLDPQLAKMVIASCDYNC SNEVLSITAMLSVPQC FVRPTEAKKA ADEAKMRFAHIDGDHLLTNV
YHAFKQNHESVQWCYDNFINYRSLMSADNVRQQLSRIMDRFNLP RRSTDFTSRDYYINIRKALVTGYFMQ
VAHLERTGHYLTVKDNQVQLHPSTVLDHKPEWVLYNEFVLTTKNYIRTCTDIKPEWLVKIAPQYYDMSN
FPQCEAKRQLDRIIAKLQSKEYSQY

TRTRPLEQKLISEEDLAANDILDYKDDDDKV

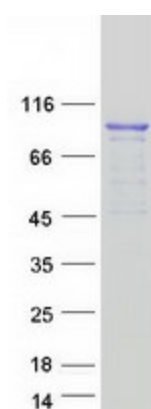
Tag:	C-Myc/DDK
Predicted MW:	90.8 kDa
Concentration:	>0.05 µg/µL as determined by microplate BCA method
Purity:	> 80% as determined by SDS-PAGE and Coomassie blue staining
Buffer:	25 mM Tris-HCl, 100 mM glycine, pH 7.3, 10% glycerol
Preparation:	Recombinant protein was captured through anti-DDK affinity column followed by conventional chromatography steps.
Note:	For testing in cell culture applications, please filter before use. Note that you may experience some loss of protein during the filtration process.



[View online »](#)

Storage:	Store at -80°C.
Stability:	Stable for 12 months from the date of receipt of the product under proper storage and handling conditions. Avoid repeated freeze-thaw cycles.
RefSeq:	NP_001349
Locus ID:	1665
UniProt ID:	O43143
RefSeq Size:	3019
Cytogenetics:	4p15.2
RefSeq ORF:	2385
Synonyms:	DBP1; DDX15; PRP43; PRPF43; PrPp43p
Summary:	The protein encoded by this gene is a putative ATP-dependent RNA helicase implicated in pre-mRNA splicing. [provided by RefSeq, Jul 2008]
Protein Pathways:	Spliceosome

Product images:



Coomassie blue staining of purified DHX15 protein (Cat# TP305914). The protein was produced from HEK293T cells transfected with DHX15 cDNA clone (Cat# [RC205914]) using MegaTran 2.0 (Cat# [TT210002]).