

## Product datasheet for **TP305906L**

### CLIC5 (NM\_016929) Human Recombinant Protein

#### Product data:

Product Type:	Recombinant Proteins
Description:	Recombinant protein of human chloride intracellular channel 5 (CLIC5), transcript variant 2, 1 mg
Species:	Human
Expression Host:	HEK293T
Expression cDNA Clone or AA Sequence:	>RC205906 protein sequence <b>Red</b> =Cloning site <b>Green</b> =Tags(s)

MTDSATANGDDRDPEIELFVKAGIDGESIGNCPFSQRLFMILWLKGVFNVTTVDLKRKPADLHNLAPGT  
HPPFLTFNGDVKTDVKNKIEEFLEETLTPEKYPKLAAKHRESNTAGIDIFSKFSAYIKNTKQQNNAALERG  
LTKALKKLDDYLNTPLEEIDANTCGEDKGSRRKFLDGDDELTLADCNLLPKLHVVKIVAKKYRNYDIPAE  
MTGLWRYLKNAYARDEFTNTCAADSEIELAYADVAKRLSRS

**TRTRPLEQKLISEEDLAANDILDYKDDDDKV**

Tag:	C-Myc/DDK
Predicted MW:	28 kDa
Concentration:	>0.05 µg/µL as determined by microplate BCA method
Purity:	> 80% as determined by SDS-PAGE and Coomassie blue staining
Buffer:	25 mM Tris-HCl, 100 mM glycine, pH 7.3, 10% glycerol
Preparation:	Recombinant protein was captured through anti-DDK affinity column followed by conventional chromatography steps.
Note:	For testing in cell culture applications, please filter before use. Note that you may experience some loss of protein during the filtration process.
Storage:	Store at -80°C.
Stability:	Stable for 12 months from the date of receipt of the product under proper storage and handling conditions. Avoid repeated freeze-thaw cycles.
RefSeq:	<u><a href="#">NP_058625</a></u>
Locus ID:	53405



[View online »](#)

UniProt ID: [Q9NZA1](#), [Q53G01](#)

RefSeq Size: 5752

Cytogenetics: 6p21.1

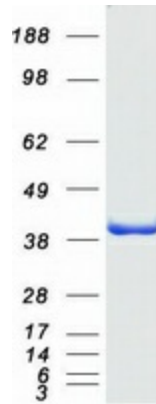
RefSeq ORF: 753

Synonyms: DFNB102; DFNB103; MST130; MSTP130

**Summary:** This gene encodes a member of the chloride intracellular channel (CLIC) family of chloride ion channels. The encoded protein associates with actin-based cytoskeletal structures and may play a role in multiple processes including hair cell stereocilia formation, myoblast proliferation and glomerular podocyte and endothelial cell maintenance. Alternatively spliced transcript variants encoding multiple isoforms have been observed for this gene. [provided by RefSeq, Dec 2011]

**Protein Families:** Druggable Genome, Ion Channels: Other

### Product images:



Coomassie blue staining of purified CLIC5 protein (Cat# [TP305906]). The protein was produced from HEK293T cells transfected with CLIC5 cDNA clone (Cat# [RC205906]) using MegaTran 2.0 (Cat# [TT210002]).