

Product datasheet for **TP305900**

Epiphycan (EPYC) (NM_004950) Human Recombinant Protein

Product data:

Product Type: Recombinant Proteins
Description: Recombinant protein of human epiphycan (EPYC), 20 µg
Species: Human
Expression Host: HEK293T
Expression cDNA Clone or AA Sequence: >RC205900 representing NM_004950
Red=Cloning site Green=Tags(s)

MKTLAGLVLGLVIFDAAVTAPTLESINYDSEYDATLEDLDNLYNYENIPVGKVEIEIATVMPSGNRELL
 TPPPQPEKAQEEEEESTPRLIDGSSPQEPEFTGVLGPHTNEDFPTCLLCTCISTTVYCDDHELDAIPP
 LPKNTAYFYSRFNRIKKINKNDFASLSDLKRIDLTSNLISEIDEDAFRKLPLQLRELVLDRDNKIRQLPELP
 TTLTFIDISNNRGRKGKQEAFKDMYDLHHLYLTDNNLDHIPLPLPENLRALHLQNNNILEMHEDTFCN
 VKNLTYIRKALEDIRLDGNPINLSKTPQAYMCLPRLPVGSLV

TRTRPLEQKLISEEDLAANDILDYKDDDDKV

Tag: C-Myc/DDK
Predicted MW: 34.7 kDa
Concentration: >0.05 µg/µL as determined by microplate BCA method
Purity: > 80% as determined by SDS-PAGE and Coomassie blue staining
Buffer: 25 mM Tris-HCl, 100 mM glycine, pH 7.3, 10% glycerol
Preparation: Recombinant protein was captured through anti-DDK affinity column followed by conventional chromatography steps.
Note: For testing in cell culture applications, please filter before use. Note that you may experience some loss of protein during the filtration process.
Storage: Store at -80°C.
Stability: Stable for 12 months from the date of receipt of the product under proper storage and handling conditions. Avoid repeated freeze-thaw cycles.
RefSeq: [NP_004941](#)
Locus ID: 1833



[View online »](#)

UniProt ID: [Q99645](#), [A0A024RBC3](#)

RefSeq Size: 1594

Cytogenetics: 12q21.33

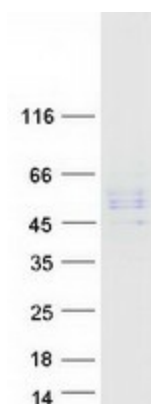
RefSeq ORF: 966

Synonyms: DSPG3; Pg-Lb; PGLB; SLRR3B

Summary: Dermatan sulfate proteoglycan 3 is a member of the small leucine-rich repeat proteoglycan family. This gene is composed of seven exons. It regulates fibrillogenesis by interacting with collagen fibrils and other extracellular matrix proteins. [provided by RefSeq, Jul 2008]

Protein Families: Secreted Protein

Product images:



Coomassie blue staining of purified EPYC protein (Cat# TP305900). The protein was produced from HEK293T cells transfected with EPYC cDNA clone (Cat# [RC205900]) using MegaTran 2.0 (Cat# [TT210002]).