

## Product datasheet for **TP305899M**

### **GNGT1 (NM\_021955) Human Recombinant Protein**

#### Product data:

Product Type:	Recombinant Proteins
Description:	Recombinant protein of human guanine nucleotide binding protein (G protein), gamma transducing activity polypeptide 1 (GNGT1), 100 µg
Species:	Human
Expression Host:	HEK293T
Expression cDNA Clone or AA Sequence:	>RC205899 protein sequence <b>Red</b> =Cloning site <b>Green</b> =Tags(s)
	MPVINIEDLTEKDKLKMEVDQLKKEVTLERMLVSKCCEEVRDYVEERSGEDPLVKGIPEDKNPFKELKGG CVIS
	<b>TRTRPLEQKLISEEDLAANDILDYKDDDDKV</b>
Tag:	C-Myc/DDK
Predicted MW:	8.3 kDa
Concentration:	>0.05 µg/µL as determined by microplate BCA method
Purity:	> 80% as determined by SDS-PAGE and Coomassie blue staining
Buffer:	25 mM Tris-HCl, 100 mM glycine, pH 7.3, 10% glycerol
Preparation:	Recombinant protein was captured through anti-DDK affinity column followed by conventional chromatography steps.
Note:	For testing in cell culture applications, please filter before use. Note that you may experience some loss of protein during the filtration process.
Storage:	Store at -80°C.
Stability:	Stable for 12 months from the date of receipt of the product under proper storage and handling conditions. Avoid repeated freeze-thaw cycles.
RefSeq:	<a href="#">NP_068774</a>
Locus ID:	2792
UniProt ID:	<a href="#">P63211</a>
RefSeq Size:	628



[View online »](#)

Cytogenetics: 7q21.3

RefSeq ORF: 222

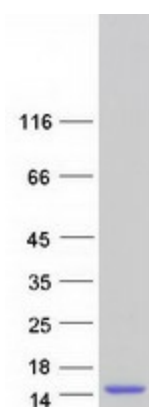
Synonyms: GNG1

**Summary:** This gene encodes the gamma subunit of transducin, a guanine nucleotide-binding protein (G protein) that is found in rod outer segments. Transducin, also known as GMPase, mediates the activation of a cyclic GTP-specific (guanosine monophosphate) phosphodiesterase by rhodopsin. [provided by RefSeq, Jul 2016]

**Protein Families:** Druggable Genome

**Protein Pathways:** Chemokine signaling pathway

### Product images:



Coomassie blue staining of purified GNGT1 protein (Cat# [TP305899]). The protein was produced from HEK293T cells transfected with GNGT1 cDNA clone (Cat# [RC205899]) using MegaTran 2.0 (Cat# [TT210002]).