

## Product datasheet for TP305897

### CSHL1 (NM\_001318) Human Recombinant Protein

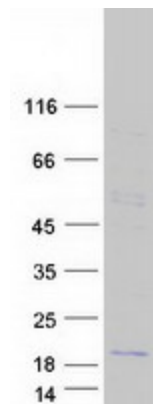
#### Product data:

Product Type:	Recombinant Proteins
Description:	Recombinant protein of human chorionic somatomammotropin hormone-like 1 (CSHL1), transcript variant 3, 20 µg
Species:	Human
Expression Host:	HEK293T
Expression cDNA Clone or AA Sequence:	>RC205897 protein sequence <b>Red</b> =Cloning site <b>Green</b> =Tags(s)  MEETQQKSNLELLHISLLIESRLEPVRFLRSTFTNNLVYDTSDDYHLLKDLEEGIQMLMGRLEDGSH LTGQTLKQTYSKFDTNSHNHDALLKNYGLLHCFRKDMDKVETFLRMVQCRSVEGSCGF  <b>TRTRPLEQKLISEEDLAANDILDYKDDDDKV</b>
Tag:	C-Myc/DDK
Predicted MW:	14.7 kDa
Concentration:	>0.05 µg/µL as determined by microplate BCA method
Purity:	> 80% as determined by SDS-PAGE and Coomassie blue staining
Buffer:	25 mM Tris-HCl, 100 mM glycine, pH 7.3, 10% glycerol
Preparation:	Recombinant protein was captured through anti-DDK affinity column followed by conventional chromatography steps.
Note:	For testing in cell culture applications, please filter before use. Note that you may experience some loss of protein during the filtration process.
Storage:	Store at -80°C.
Stability:	Stable for 12 months from the date of receipt of the product under proper storage and handling conditions. Avoid repeated freeze-thaw cycles.
RefSeq:	<u><a href="#">NP_001309</a></u>
Locus ID:	1444
UniProt ID:	<u><a href="#">I6L999</a></u>
RefSeq Size:	661


[View online »](#)

<b>Cytogenetics:</b>	17q23.3
<b>RefSeq ORF:</b>	384
<b>Synonyms:</b>	CS-5; CSHP1; CSL; GHB4; hCS-L
<b>Summary:</b>	The protein encoded by this gene is a member of the somatotropin/prolactin family of hormones which play an important role in growth control. The gene, along with four other related genes, is located at the growth hormone locus on chromosome 17 where they are interspersed in the same transcriptional orientation; an arrangement which is thought to have evolved by a series of gene duplications. Although the five genes share a remarkably high degree of sequence identity, they are expressed selectively in different tissues. This particular family member is expressed in placental villi, although it was originally thought to be a pseudogene. In fact, alternative splicing suggests that the majority of the transcripts would be unable to express a secreted protein. Alternatively spliced transcript variants encoding different isoforms have been identified. [provided by RefSeq, Jul 2008]
<b>Protein Families:</b>	Secreted Protein

### Product images:



Coomassie blue staining of purified CSHL1 protein (Cat# TP305897). The protein was produced from HEK293T cells transfected with CSHL1 cDNA clone (Cat# [RC205897]) using MegaTran 2.0 (Cat# [TT210002]).