

## Product datasheet for **TP305894L**

### OCEL1 (NM\_024578) Human Recombinant Protein

#### Product data:

**Product Type:** Recombinant Proteins

**Description:** Recombinant protein of human occludin/ELL domain containing 1 (OCEL1), 1 mg

**Species:** Human

**Expression Host:** HEK293T

**Expression cDNA Clone or AA Sequence:** >RC205894 protein sequence  
**Red**=Cloning site **Green**=Tags(s)

MHNPDGSASPTADPGSELQTLGQAARRPPPPRAGHDAPRRTRPSARKPLSCFSRRPMPPTREPPKTRGSRG  
HLHHTPPGPGPLQLGLAPRGLKTSAPRPPCQPQPGPHKAKTKKIVFEDELLSQALLGAKKPIGAIPKGHK  
PRPHPVPDYELKYPPVSSERERSRYVAVFQDQYGEFLELQHEVGCAQAKLRQLEALLSSLPPPQSQKEAQ  
VAARVWREFEMKRMDPGFLDKQARCHYLKGLRHLKTQIQKFDDQGDSEGSVYF

**TRTRPLEQKLISEEDLAANDILDYKDDDDKV**

**Tag:** C-Myc/DDK

**Predicted MW:** 29.2 kDa

**Concentration:** >0.05 µg/µL as determined by microplate BCA method

**Purity:** > 80% as determined by SDS-PAGE and Coomassie blue staining

**Buffer:** 25 mM Tris-HCl, 100 mM glycine, pH 7.3, 10% glycerol

**Preparation:** Recombinant protein was captured through anti-DDK affinity column followed by conventional chromatography steps.

**Note:** For testing in cell culture applications, please filter before use. Note that you may experience some loss of protein during the filtration process.

**Storage:** Store at -80°C.

**Stability:** Stable for 12 months from the date of receipt of the product under proper storage and handling conditions. Avoid repeated freeze-thaw cycles.

**RefSeq:** [NP\\_078854](#)

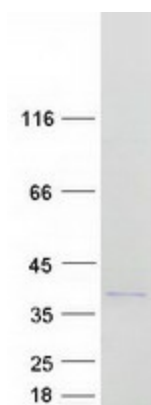
**Locus ID:** 79629

**UniProt ID:** [Q9H607](#)



[View online »](#)

RefSeq Size: 1124  
Cytogenetics: 19p13.11  
RefSeq ORF: 792  
Synonyms: FWP009; S863-9

**Product images:**

Coomassie blue staining of purified OCEL1 protein (Cat# [TP305894]). The protein was produced from HEK293T cells transfected with OCEL1 cDNA clone (Cat# [RC205894]) using MegaTran 2.0 (Cat# [TT210002]).