

Product datasheet for **TP305891**

RBP5 (NM_031491) Human Recombinant Protein

Product data:

| | |
|--|--|
| Product Type: | Recombinant Proteins |
| Description: | Recombinant protein of human retinol binding protein 5, cellular (RBP5), 20 µg |
| Species: | Human |
| Expression Host: | HEK293T |
| Expression cDNA Clone or AA Sequence: | >RC205891 protein sequence Red =Cloning site Green =Tags(s) MPPNLTGYRFFVSQKNMEDYLQALNISLAVRKIALLLKPDKEIEHQGNHMTVRTLSTFRNYTVQFDVGVE FEEDLRSVDGRKCQTIVTWEEHLVCVQKGEVPNRGWRHWLEGEMLYLELTARDAVCEQVFRKVR TRTRPLEQKLISEEDLAANDILDYKDDDDKV |
| Tag: | C-Myc/DDK |
| Predicted MW: | 15.8 kDa |
| Concentration: | >0.05 µg/µL as determined by microplate BCA method |
| Purity: | > 80% as determined by SDS-PAGE and Coomassie blue staining |
| Buffer: | 25 mM Tris-HCl, 100 mM glycine, pH 7.3, 10% glycerol |
| Preparation: | Recombinant protein was captured through anti-DDK affinity column followed by conventional chromatography steps. |
| Note: | For testing in cell culture applications, please filter before use. Note that you may experience some loss of protein during the filtration process. |
| Storage: | Store at -80°C. |
| Stability: | Stable for 12 months from the date of receipt of the product under proper storage and handling conditions. Avoid repeated freeze-thaw cycles. |
| RefSeq: | NP_113679 |
| Locus ID: | 83758 |
| UniProt ID: | P82980 |
| RefSeq Size: | 968 |
| Cytogenetics: | 12p13.31 |



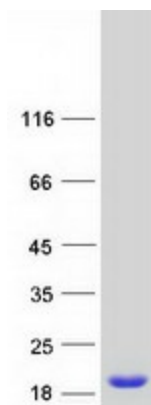
[View online »](#)

RefSeq ORF: 405

Synonyms: CRBP-III; CRBP3; CRBP3III; HRBPiso

Summary: The protein encoded by this gene is a cellular retinol-binding protein expressed highly in kidney and liver. Down-regulation of the encoded protein in hepatocellular carcinoma was associated with large tumor size and poor patient survival rates. [provided by RefSeq, Jul 2016]

Product images:



Coomassie blue staining of purified RBP5 protein (Cat# TP305891). The protein was produced from HEK293T cells transfected with RBP5 cDNA clone (Cat# [RC205891]) using MegaTran 2.0 (Cat# [TT210002]).