

Product datasheet for **TP305887M**

HERPUD2 (NM_022373) Human Recombinant Protein

Product data:

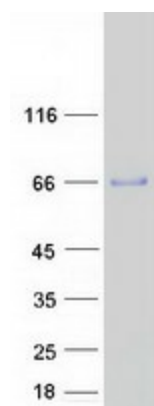
Product Type:	Recombinant Proteins
Description:	Recombinant protein of human HERPUD family member 2 (HERPUD2), 100 µg
Species:	Human
Expression Host:	HEK293T
Expression cDNA Clone or AA Sequence:	>RC205887 protein sequence Red =Cloning site Green =Tags(s)
	<p>MDQSGMEIPVTLLIKAPNQKYSQTISCFLNWTVGKLKTHLSNVYPSKPLTKDQRLVYSGRLLPDHLQLK DILRKQDEYHMHVHVCTSRTPSSPKSSTNRESHEALTSSSNSSSDHSGSTTPSSGQETLSLAVGSSSEG LRQRTLPAQTDQAQSHQFPYVMQGNVDNQFPGQAAPPGFVPYPAFSPLQMLWWQMYAHQYYM QYQAAV SAQATSNVNPTQPTTSQPLNLAHVPGEEPPAPNLVAQENRPMNENVQMNAQGGPVLNEEDFNRDW LDWM YTFSRRAILLSIVYFYSSFSRFIMVMGAMLLVYLHQAGWFPFRQEGGHQAPNNNAEVNNDGQNANNLE L EEMERLMDDGLEDESGEDGGEDASAIQRPGLMASAWSFITFFFTSLIPEGPPQVAN</p> <p>TRTRPLEQKLISEEDLAANDILDYKDDDDKV</p>
Tag:	C-Myc/DDK
Predicted MW:	45 kDa
Concentration:	>0.05 µg/µL as determined by microplate BCA method
Purity:	> 80% as determined by SDS-PAGE and Coomassie blue staining
Buffer:	25 mM Tris-HCl, 100 mM glycine, pH 7.3, 10% glycerol
Preparation:	Recombinant protein was captured through anti-DDK affinity column followed by conventional chromatography steps.
Note:	For testing in cell culture applications, please filter before use. Note that you may experience some loss of protein during the filtration process.
Storage:	Store at -80°C.



[View online »](#)

Stability:	Stable for 12 months from the date of receipt of the product under proper storage and handling conditions. Avoid repeated freeze-thaw cycles.
RefSeq:	<u>NP_071768</u>
Locus ID:	64224
UniProt ID:	<u>Q9BSE4</u>
RefSeq Size:	2932
Cytogenetics:	7p14.2
RefSeq ORF:	1218
Summary:	Could be involved in the unfolded protein response (UPR) pathway.[UniProtKB/Swiss-Prot Function]
Protein Families:	Druggable Genome, Transmembrane

Product images:



Coomassie blue staining of purified HERPUD2 protein (Cat# [TP305887]). The protein was produced from HEK293T cells transfected with HERPUD2 cDNA clone (Cat# [RC205887]) using MegaTran 2.0 (Cat# [TT210002]).