

## Product datasheet for TP305877L

### IFI30 (NM\_006332) Human Recombinant Protein

#### Product data:

Product Type:	Recombinant Proteins
Description:	Purified recombinant protein of Homo sapiens interferon, gamma-inducible protein 30 (IFI30), 1 mg
Species:	Human
Expression Host:	HEK293T
Expression cDNA Clone or AA Sequence:	>RC205877 protein sequence Red=Cloning site Green=Tags(s)

MTLSPLLLFLPPLLLLLDVPTAAVQASPLQALDFFGNGPPVNYKTGNLYLRGPKKSNAPLVNVTLYEALCGGCRAFLIRELFPTWLLVMEILNVTLPYGNAQEQNVSGRWEFKCQHGEEECKFNKVEACVLDELDMELAFALTIVCMEEFEDMERSLPLCLQLYAPGLSPDTIMECAMGDRGMQLMHANAQRDALQPPHEYPWVTVNGKPLEDQTQLLTLVCQLYQGKKPDVCPSSSTSSLRVCFK

TRTRPLEQKLISEEDLAANDILDYKDDDDKV

Tag:	C-Myc/DDK
Predicted MW:	25.2 kDa
Concentration:	>0.05 µg/µL as determined by microplate BCA method
Purity:	> 80% as determined by SDS-PAGE and Coomassie blue staining
Buffer:	25 mM Tris-HCl, 100 mM glycine, pH 7.3, 10% glycerol
Preparation:	Recombinant protein was captured through anti-DDK affinity column followed by conventional chromatography steps.
Note:	For testing in cell culture applications, please filter before use. Note that you may experience some loss of protein during the filtration process.
Storage:	Store at -80°C.
Stability:	Stable for 12 months from the date of receipt of the product under proper storage and handling conditions. Avoid repeated freeze-thaw cycles.
RefSeq:	<u><a href="#">NP_006323</a></u>
Locus ID:	10437



[View online »](#)

UniProt ID: [P13284](#), [A0A024R7N7](#)

RefSeq Size: 1034

Cytogenetics: 19p13.11

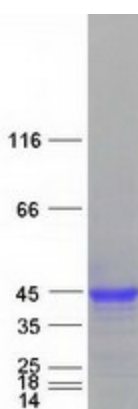
RefSeq ORF: 750

Synonyms: GILT; IFI-30; IP-30; IP30

**Summary:** The protein encoded by this gene is a lysosomal thiol reductase that at low pH can reduce protein disulfide bonds. The enzyme is expressed constitutively in antigen-presenting cells and induced by gamma-interferon in other cell types. This enzyme has an important role in MHC class II-restricted antigen processing. [provided by RefSeq, Jul 2008]

**Protein Pathways:** Antigen processing and presentation

### Product images:



Coomassie blue staining of purified IFI30 protein (Cat# [TP305877]). The protein was produced from HEK293T cells transfected with IFI30 cDNA clone (Cat# [RC205877]) using MegaTran 2.0 (Cat# [TT210002]).